



**STUDENT  
HANDBOOK**  
**MISSISSIPPI STATE UNIVERSITY®**

*Last updated July, 2024*



# Get Connected

## MISSISSIPPI STATE FAMILY HUB

**A NEW WAY TO  
STAY INVOLVED WITH  
YOUR STUDENT**

Encourage your family members to join our communication platform.



The Mississippi State Family Hub is designed to enhance your Bulldog family experience by providing customized newsletters and 24/7 access to information, news and resources. This platform requires an email to create an account.



662.325.3611



family@msstate.edu



family.msstate.edu



@msstatefamily





# Contact us!

Let us help you navigate the many different resources at Mississippi State. Please don't hesitate to reach out if you need anything at all.



**Dr. Thomas Bourgeois**

*Dean of Students and Associate Vice Provost for Student Success*  
662.325.3611 (Office) | 662.312.1996 (Cell) | [dos@msstate.edu](mailto:dos@msstate.edu)



**Dr. Cat Walker**

*Assistant Dean of Students and Director of Parent & Family Services*  
662.325.3611 (Office) | 662.418.2441 (Cell) | [family@msstate.edu](mailto:family@msstate.edu)



**Becky Faulk**

*Assistant Director of Parent & Family Services*  
662.325.3611 (Office) | [family@msstate.edu](mailto:family@msstate.edu)



# IMPORTANT RESOURCES

## EMERGENCY CONTACTS

Dean of Students' Office and  
Office of Parent & Family Services  
662.325.3611 | [students.msstate.edu](http://students.msstate.edu)

MSU Police Department  
662.325.2121 | [police.msstate.edu](http://police.msstate.edu)

Campuswide Emergency (Info Line)  
662.325.5555 | [emergency.msstate.edu](http://emergency.msstate.edu)

Longest Student Health Center  
662.325.2431 | [healthcenter.msstate.edu](http://healthcenter.msstate.edu)

OCH Regional Medical Center in Starkville  
Main Number: 662.323.4320  
Emergency Room: 662.615.2692  
[och.org](http://och.org)

## ACADEMIC COLLEGES

Agriculture and Life Sciences  
662.325.2110 | [cals.msstate.edu](http://cals.msstate.edu)

Architecture, Art and Design  
662.325.5150 | [caad.msstate.edu](http://caad.msstate.edu)

Arts and Sciences  
662.325.2646 | [cas.msstate.edu](http://cas.msstate.edu)

Bagley Engineering  
662.325.2270 | [bagley.msstate.edu](http://bagley.msstate.edu)

Business  
662.325.2580 | [business.msstate.edu](http://business.msstate.edu)

Education  
662.325.3717 | [educ.msstate.edu](http://educ.msstate.edu)

Forest Resources  
662.325.2952 | [cfr.msstate.edu](http://cfr.msstate.edu)

Professional and Continuing Studies  
662.325.3473 | [cpcs.msstate.edu](http://cpcs.msstate.edu)

Veterinary Medicine  
662.325.3432 | [vetmed.msstate.edu](http://vetmed.msstate.edu)

## RESIDENCE HALLS

Cresswell | 662.717.1204

Critz | 662.325.5849

Deavenport | 662.717.0043

Dogwood | 662.717.0062

Griffis | 662.717.0798

Hathorn | 662.717.0143

Herbert | 662.325.2867

Hull | 662.325.8156

Hurst | 662.717.0645

Magnolia | 662.717.0028

McKee | 662.325.3214

Moseley | 662.717.0964

Nunnelee | 662.717.0947

Oak | 662.717.0012

Ruby | 662.717.0150

Sessums | 662.325.3440





# IMPORTANT RESOURCES

## STUDENT SERVICES

### Account Services

662.325.2071  
[controller.msstate.edu/accountservices](http://controller.msstate.edu/accountservices)

### Admissions and Scholarships

662.325.2224 | [admissions.msstate.edu](http://admissions.msstate.edu)

### Alumni Association

662.325.7000 | [alumni.msstate.edu](http://alumni.msstate.edu)

### Athletic Ticket Office

662.325.2600 | [hailstate.com](http://hailstate.com)

### Barnes & Noble at MSU

662.325.8361 | [msstate.bncollege.com](http://msstate.bncollege.com)

### Band

662.325.2713 | [msuband.msstate.edu](http://msuband.msstate.edu)

### Career Center

662.325.3344 | [career.msstate.edu](http://career.msstate.edu)

### Center for America's Veterans

662.325.6719 | [veterans.msstate.edu](http://veterans.msstate.edu)

### Center for Academic Excellence

662.325.2957 | [studentsuccess.msstate.edu](http://studentsuccess.msstate.edu)

### Center for Student Activities

662.325.2930 | [union.msstate.edu](http://union.msstate.edu)

### Cheese Store

662.325.2338 | [msucheese.com](http://msucheese.com)

### Colvard Student Union

662.325.3228 | [union.msstate.edu](http://union.msstate.edu)

### Computer-Based Testing Services

662.325.6610 | [cbit.msstate.edu](http://cbit.msstate.edu)

### Counseling Center

662.325.2091 | [counseling.msstate.edu](http://counseling.msstate.edu)

### Dining Services

662.325.7120 | [dining.msstate.edu](http://dining.msstate.edu)

### Directory Assistance

662.325.2323 | [msstate.edu/directory](http://msstate.edu/directory)

### Disability Resource Center

662.325.3335 | [drc.msstate.edu](http://drc.msstate.edu)

### Financial Aid

662.325.2450 | [sfa.msstate.edu](http://sfa.msstate.edu)

### Florist

662.325.3585 | [florist.msstate.edu](http://florist.msstate.edu)

### Fraternity and Sorority Life

662.325.2930 | [greeks.msstate.edu](http://greeks.msstate.edu)

### Holmes Cultural Diversity Center

662.325.2033 | [hcdc.msstate.edu](http://hcdc.msstate.edu)

### Housing and Residence Life

662.325.3555 | [housing.msstate.edu](http://housing.msstate.edu)

### Information Technology Services (Service Desk)

662.325.0631 | [servicedesk.msstate.edu](http://servicedesk.msstate.edu)

### International Institute

662.325.8929 | [international.msstate.edu](http://international.msstate.edu)

### Longest Student Health Center

662.325.2431 | [healthcenter.msstate.edu](http://healthcenter.msstate.edu)

### Maroon Volunteer Center

662.325.2150 | [mvc.msstate.edu](http://mvc.msstate.edu)

### MSU Libraries

662.325.7668 | [library.msstate.edu](http://library.msstate.edu)

### Recreational Sports

662.325.7529 | [urec.msstate.edu](http://urec.msstate.edu)

### Registrar

662.325.2022 | [registrar.msstate.edu](http://registrar.msstate.edu)

### ROTC/Air Force

662.325.3810 | [afrotc.msstate.edu](http://afrotc.msstate.edu)

### ROTC/Army

662.325.3503 | [armyrotc.msstate.edu](http://armyrotc.msstate.edu)

### Shackouls Honors College

662.325.2522 | [honors.msstate.edu](http://honors.msstate.edu)

### Student Affairs

662.325.3045 | [saffairs.msstate.edu](http://saffairs.msstate.edu)

### Student Leadership and Community Engagement

662.325.0244 | [slce.msstate.edu](http://slce.msstate.edu)

### Student Money Management Center

662.325.8516 | [smmc.msstate.edu](http://smmc.msstate.edu)

### Student Well-Being

662.325.2090 | [studentwellbeing.msstate.edu](http://studentwellbeing.msstate.edu)

### Transportation (Parking)

662.325.3526 | [transportation.msstate.edu](http://transportation.msstate.edu)

### U.S. Postal Service Office

662.323.5772 | [usps.com](http://usps.com)



# TABLE OF CONTENTS

## TRANSITION TO MSU

Division of Student Affairs .....	1
Dean of Students.....	1
Office of Parent & Family Services .....	1

## JUST FOR STUDENTS

23 Rules of College Etiquette.....	4
Keeping Your Parents Informed.....	6
MSU Traditions.....	7
MSU Dictionary.....	9
Student Conduct .....	11
Alcohol and Drugs.....	11
Weapon Possession.....	11
Bulldog Checklist .....	12
Housing and Residence Life.....	16
Mail and Package Delivery Services .....	20
Dining Services.....	21
Barnes & Noble at MSU .....	23
Career Center.....	24
Transportation.....	26

## INTERNATIONAL STUDENTS

International Student Resources .....	29
11 Places You Should Visit .....	35

## HEALTH & WELL-BEING

Office of Care, Concern and Well-Being .....	38
Bully's Pantry.....	38
Maroon Meals .....	38
Disability Resource Center.....	38
University Common Ministry .....	39
Maroon Alert.....	40
Smoke-Free Campus .....	40
University Recreation.....	41
MSU Police Department.....	42
Longest Student Health Center .....	43
Student Counseling Services.....	43
Office for Student Well-Being.....	44
Telus Health Student Support App.....	44

## ACADEMIC SUCCESS

Office of the Registrar.....	46
Class Attendance.....	46
Registering for Classes and Schedule Changes .....	47
Academic Forgiveness.....	47

Dropping a Course vs.

Withdrawing from the University .....	47
F.E.R.P.A. ....	48
Academic Calendar .....	48
GPA Calculator.....	49
Maroon U.....	49
Honor Code .....	50
Center for Academic Excellence .....	51
The Writing Center .....	52
MSU Libraries .....	52
National Student Exchange.....	53
Graduate School .....	54
Academic Colleges, Majors and Concentrations.....	55
Academic Advisors.....	57
Judy and Bobby Schackouls Honors College.....	61

## FINANCIAL PLANNING

New Student Checklist .....	62
Financial Aid .....	64
How to Apply for Aid .....	65
How to Accept or Decline	
Scholarships and Financial Aid .....	68
Sample Bill.....	69
Student Money Management Center .....	70

## STUDENT ENGAGEMENT

Center for Student Activities.....	71
Fraternity and Sorority Life .....	72
Center for America's Veterans .....	72
Student Leadership and	
Community Engagement.....	73
Office of Study Abroad.....	74
Division of Access,	
Opportunity and Success.....	75
Holmes Cultural Diversity Center .....	76
MSU ID Card .....	77
Information Technology Services.....	77
Alumni Association .....	82
Athletics .....	83
Festivals and Events .....	84
Off-Campus Student Services.....	85
Outdoor Recreation .....	85
Distinctive Districts.....	86
Notes .....	87
Campus Map .....	88





## **DIVISION OF STUDENT AFFAIRS**

662.325.3045 | [SAFFAIRS.MSSTATE.EDU](mailto:SAFFAIRS.MSSTATE.EDU) | [@MSSTATESTUDENTS](https://www.instagram.com/msstatestudents)

YMCA BUILDING - 2ND FLOOR

The Division of Student Affairs is dedicated to fostering an environment where students thrive. With a focus on well-being and belonging, our team strives to create opportunities that enrich a student's Mississippi State journey and sets students on a path to make a meaningful impact in the world.

## **DEAN OF STUDENTS**

662.325.3611 | [STUDENTS.MSSTATE.EDU](mailto:STUDENTS.MSSTATE.EDU) | [DOS@MSSTATE.EDU](mailto:DOS@MSSTATE.EDU)

YMCA BUILDING - GROUND FLOOR

The Dean of Students' Office strives to provide an exceptional experience for all Mississippi State students through advocacy and support. This office serves as an information center for referrals and questions regarding university life. We are committed to working with students as they learn about campus resources and develop the necessary tools to be successful. The goal of the Dean of Students' Office is to help students through situations rather than help them get out of them. Students who need help may contact us in person, by phone, or through email.

## **OFFICE OF PARENT & FAMILY SERVICES**

662.325.3611 | [FAMILY.MSSTATE.EDU](mailto:FAMILY.MSSTATE.EDU) | [FAMILY@MSSTATE.EDU](mailto:FAMILY@MSSTATE.EDU) | [@MSSTATEFAMILY](https://www.instagram.com/msstatefamily)

YMCA BUILDING - GROUND FLOOR | 175 LEE BLVD | P.O. BOX DS; MISSISSIPPI STATE, MS 39762

The Office of Parent & Family Services serves as your liaison to Mississippi State, helping you navigate the university's vast resources and administrative processes. A "one-stop shop," we will connect you with the appropriate department and contact to address any of your questions or concerns.



# JUST FOR STUDENTS

Mississippi State is committed to our partnership with students. We have compiled this book to guide and assist you in navigating through our many different university resources. By becoming familiar with these resources, you can be successful here at MSU.



## 23 RULES OF COLLEGE ETIQUETTE

### RESPECT AND FOLLOW OUR SCHOOL'S HONOR CODE

This is the most important rule of all. Don't cheat and don't steal information. Cheating can occur in many forms—from copying a paper a friend turned in a semester before to stealing music off of the Internet.

### GO TO CLASS AND GET THERE ON TIME

It is disrespectful to your professor and distracting to your classmates to walk into a class or lecture late. You need to do everything you can to avoid missing class. If you don't think the professor has something valuable to teach you about the subject, then don't take the class.

### BE PREPARED FOR CLASS AND AN ACTIVE PARTICIPANT

When professors give reading assignments for the next class, they expect that you will have read the material prior to when you arrive. If you have a question about the topic in the lecture, raise your hand, wait to be called on, and ask the question. More than likely, others are confused about the same point and will appreciate you asking the question.

### DON'T MONOPOLIZE THE DISCUSSION

Inevitably, in every class, there is one person who wants to comment on every single topic. This person will normally have his or her hand raised during the entire class and also will want to talk to the professor afterward. Don't be this person. Give other people a chance to speak and ask questions. You will learn from them.

### USE SOCIAL MEDIA CAREFULLY

Remember that anything you put on the Web is public—even if you have to approve friends to see your page. What may seem appropriate now—making fun of an organization or photos of you after too many drinks at a party—may not be appropriate later. Remember that professors, employers and graduate schools have access to these Web pages, too. You don't want your election for U.S. senator to be marred by your former behavior.

### NEVER TYPE SOMETHING YOU WOULDN'T OR SHOULDN'T SAY

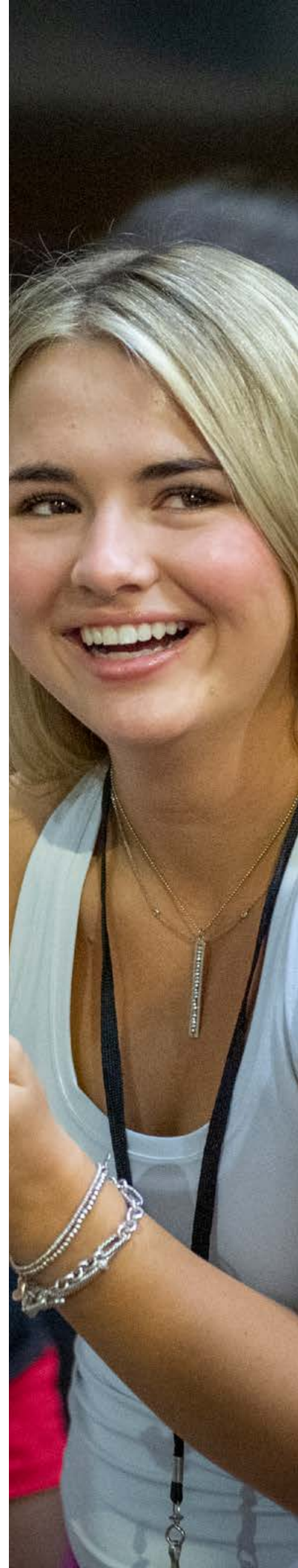
Sometimes it is easy to sit at your computer and write a harsh e-mail to a friend or professor. Remember that tone is hard to read in an e-mail and that face-to-face communication is always better. If you wouldn't say it to a professor or friend's face, then don't assume it is appropriate for e-mail either.

### DON'T TALK TO YOUR FRIENDS IN CLASS

You are in class to learn, not to socialize. If you are taking a class with friends, try to sit alone so you won't be distracted. If you do sit with friends, remember this—it is rude to laugh and talk during class. You'll bring attention to yourselves that you will not want. Most likely, the professor will call on you more or evaluate your class participation grade lower.

### TURN OFF THE GADGETS (CELL PHONE, IPHONE, BLACKBERRY, INTERNET)

It is fine to take notes on a laptop (try to type quietly), but it is not fine for your cell phone to ring during lecture. It is not OK to send text messages during class. And, you shouldn't be playing Internet poker during Psychology 101, either.





## **DON'T TALK ABOUT OR COMPLAIN ABOUT GRADES**

The best rule to follow here is to treat grades as personal and private. Don't obsess about them before a test, and don't compare them after a test. Nothing good can ever come of talking about grades. If you got a better grade, you'll make the other person feel bad. If the other person did, he or she will make you feel bad. Just remember, not every person is a straight-A student. You may know that you excel in the humanities, but math and science are challenging for you. Comparing grades will only make you or others feel terrible.

## **KEEP YOUR COMMITMENTS**

Make commitments carefully, and once you make them, keep them. This is especially important when working on group projects and in organizations. If people are depending on you, you need to be worthy of their trust.

## **DON'T GO TO A PROFESSOR'S OFFICE HOURS TO LOBBY FOR A BETTER GRADE**

Make commitments carefully, and once you make them, keep them. This is especially important when working on group projects and in organizations. If people are depending on you, you need to be worthy of their trust.

## **DON'T BE A MOOCH**

Don't ask people to lend you money and then neglect to pay them back. Don't ask people to pay for the pizza and then forget to pay your share. Don't always drink your roommate's Cokes without bringing a six-pack every now and then. When in question, contribute more, not less.

## **CLEAN UP AFTER YOURSELF**

This should be a no-brainer, but it isn't for everyone. Here's the bottom line—throw away your trash. Don't make messes in common areas. Don't let your clutter infringe on your roommate's space.

## **BE A GOOD LISTENER**

To be a good friend, you have to be a good listener. Remember the old saying that you have two ears and one mouth for a reason so act accordingly.

## **KEEP SECRETS AND DON'T GOSSIP**

Anything that is shared in confidence with you should stay that way. For you to be trusted for your advice and counsel, you must first be seen as someone who can be trusted.

## **SHARE EVERYTHING YOU CAN**

Share your class notes, clothes, iPod—whatever a roommate, friend or classmate might need. In college, what goes around, comes around. Someday it will be you needing the class notes, shirt for the big date, or the iPod for your long run. If you share with others, they will share with you.

## **ASK FIRST, BORROW SECOND**

Remember that you should never borrow anything without asking first. This is one of the easiest ways to ruin a great relationship with a roommate. Just because it was OK for you to borrow his or her iPod today does not mean it's OK to borrow it tomorrow.





## **CONEY MESSAGES PROMPTLY**

If someone stops by or calls for your roommate and you take a message, don't forget to leave that message. This is another way to prevent a major battle with your roommate.

## **CONTROL YOUR USE OF ALCOHOL AND DRUGS**

Without passing judgment on the advisability of the use of alcohol and drugs, know that if you get trashed or baked, or both, you become a safety concern and a burden on your friends and roommates. You should never allow yourself to lose control of your faculties to the point that you must rely on others for your safety.

## **WATCH AFTER YOUR FRIENDS AND ROOMMATES**

Remember to do things in groups and keep an eye on everyone in your group. Talk to each other and reach an agreement before you go out about what the rules of the road are going to be. Do you all go home together at a certain time? Do you wait for each other? Do you have a code that means "This person is scary-help"? Most of the bad things that will happen to you or a friend in college will occur if you are alone or without your friends to help you make good decisions.

## **PRACTICE SAFE SEX**

In this era of casual sexual "hookups" on campus, condom use should be the rule and should be assumed. It can sometimes be awkward to initiate a discussion about protection in the heat of passion. Often, one partner will wait for the other to start the discussion, and unfortunately the result, many times, is that neither one does start, exposing both partners to the risk of sexually transmitted disease and unwanted pregnancy. Don't wait for the discussion. Assume safe sex to be the rule as a gesture of mutual respect.

## **DON'T DATE YOUR ROOMMATE'S OR FRIEND'S SIBLINGS OR EXES**

This is the quickest way to lose your roommate and/or your friend. Think about this: will you be comfortable in a long-term relationship with someone who also dated your roommate? Would you be comfortable dating your best friend's brother or sister; visiting them on holidays and vacations? What if he or she cheats on you? What if you cheat on him or her? What if the relationship ends badly? You could easily lose both your friend and your romantic partner.

## **RESPECT DIFFERENCES IN TASTE, OPINION, POLITICS, RELIGION, AND SEXUAL PREFERENCE**

Although most of us are naturally drawn to people who look, act and think like we do, college is a diverse world full of people who don't. Remember that college is a time of exploration and personal growth for almost everyone. Learn to embrace diversity and strive to understand other people's points of view and perspectives, even if ultimately you don't agree with them. Listen more and judge less, and with some luck, you will be treated the same way by others.



# KEEPING YOUR PARENTS INFORMED

As you prepare to go to college, you are probably excited or anxious, or both. You have had your parents to help you the last several years, so you will probably plan to rely on them during your adventure at college. Parents are a perfect sounding board for ideas and for administering advice. Sometimes, parents can be too involved in your college experience. Here are some ideas about how to set boundaries on what you should and should not ask your parents to do.

## SET UP A SCHEDULE FOR CHECKING IN

Talk to your parents before you go to college about when you will talk and how you will communicate. Your parents might be fearful that you are basically going off into the jungle. Giving them set times to hear from you will reassure them that you are not gone forever. A good idea is to agree to talk every other day or every third day. Some students like to send an e-mail to parents every other day that says, "I'm doing fine. Don't worry." Of course, you can tell them more if you want to, but at least this way, they will know you are alive and kicking.

In addition, it's a good idea to have a "date" each week for a lengthy conversation about what all has happened at MSU. Sunday nights are often a great time for you and your parents to talk about everything. It might even become a ritual for you to talk about the past week to prepare for the upcoming week. Know that if you set a time with your parents, you need to stick to it. They will really look forward to hearing from you.

## CALL YOUR PARENTS ON THE GOOD DAYS

When things go wrong—and things will go wrong—you are going to want to call home. Do it. Call home and get advice about how to mend the relationship with your roommate, how to study harder for the next exam, and how to change a flat tire. But, remember to call home on the good days, too. A lot of times when you are hanging out with friends, joining fun organizations, and doing well in class, you don't call home. Things are going so well that you don't need support. Your parents want to know when you do well just as much as they want to know when you need help. Call and tell them.

## SCHEDULE CAMPUS VISITS FOR FAMILIES

There is nothing worse than having your parents show up unexpectedly at your dorm when you are about to go out with friends. They might even want to come in and look around. Imagine how shocked they will be to see seven half-empty pizza boxes and six weeks of dirty laundry scattered across the floor. Plus, it's hard to choose between doing something you really want or have to do and spending time with your family when they show up unexpectedly. Ask your parents to call first.

## ASK YOUR PARENTS BEFORE YOU BRING A FRIEND OR SIGNIFICANT OTHER ALONG

A lot of times when your parents come to campus for a night or a weekend, they are desperate to spend some time alone with you. The same thing is true for when you go home for the weekend. If you bring a buddy to tag along, it's hard for your parents to feel like they really got to spend quality time with you. Even if your parents adore the guy or girl you have been dating for the last three years, they will still want some time with you alone. Talk to them about it so that no feelings are unintentionally hurt.

## WEEKENDS AT HOME

Parents are not mind readers—even though they try to be. Let them know exactly what you plan to do when you are home for a weekend. Often this is what happens—you tell your mom and dad that you'll be home Friday night for the weekend.

**Their plan:** They have your favorite meal, on the table at 6 p.m. sharp. They have already made plans to go get your hair cut bright and early on Saturday morning, followed by a day of manual labor in the yard finishing up a project they need help with. Sunday will be early church, a family lunch and then a quick trip to visit your grandmother in the nursing home.

**Your plan:** You planned on getting to your hometown around 8 p.m., changing clothes quickly and going out with high school friends at 9. You'll stay out late catching up and partying until 2 or 3 a.m., then sleep until noon on Saturday. That afternoon, you want to go by the mall to get a new shirt for the upcoming game. Saturday night, you want to go to the movies and then on Sunday you'll leave early to get back for a group study session. To prevent this, talk to your parents before you get home. You'll be glad you did.

# MSU TRADITIONS

## THE BULLDOG

Mississippi State University athletic teams are called Bulldogs, a name earned and maintained over the decades by the tough, tenacious play of student-athletes wearing the maroon and white. The official school mascot is an American Kennel Club-registered English bulldog, given the inherited title of "Bully."

As with most universities, State teams answered to different nicknames through the years. The first squads representing Mississippi A&M College were proud to be called Aggies, and when the school officially became Mississippi State College in 1932, the nickname Maroons, for State's uniform color, gained prominence. Bulldogs became the official title for State teams in 1961, not long after State College was granted university status. Yet, references to school teams and athletes as Bulldogs actually go back to early in the century, and this nickname was used almost interchangeably with both Aggies and Maroons, since at least 1905.

On Nov. 30 of that year, the A&M football team shut out their arch-rivals from the University of Mississippi 11-0 in Jackson. The campus newspaper, *The Reflector*, reported: "After the game, filled with that emotion that accompanies every great victory, there was nothing left for the cadets to do but to complete the great victory by showing sympathy for the dead athletic spirit of the University, by having a military funeral parade.

"A coffin was secured, decorated with University colors and a bulldog pup placed on top. It was then placed on the shoulders of a dozen cadets, and the procession started down Capitol Street, preceded by the band playing a very pathetic funeral march."

Other newspaper reports of the victory commented on the "bulldog" style of play by the A&M 11, and the bulldog was soon publicly accepted as a school athletic symbol. Accounts of a 1926 pep rally in Meridian had another bulldog parading with students.

Use as an official game mascot began in 1935 when Coach Maj. Ralph Sasse, on "orders" from his team, went to Memphis, Tenn., to select a bulldog. Ptolemy, a gift of the Edgar Webster family, was chosen and the Bulldogs promptly defeated Alabama 20-7. A litter mate of Ptolemy became the first mascot called "Bully" shortly after Sasse's team beat mighty Army 13-7 at West Point that same year, perhaps the greatest victory in MSU football history. But Bully I earned more fame the hard way when, in 1939, a campus bus cut short his career—and his life. Days of campus mourning followed, as Bully lay in state in a glass coffin. A halfmile funeral procession accompanied by the Famous Maroon Band and three ROTC battalions went to Scott Field where Bully was buried under the bench at the 50-yard line. Even *LIFE Magazine* covered the event. Other Bullies have since been buried at campus dorms, fraternity houses and also at the football stadium.

For years, Bully was a target for kidnappers, the last incident occurring prior to the 1974 State-Ole Miss game. The Bulldog team won anyway, 31- 13. While early Bullies once roamed campus freely or lived in fraternities, today the official university mascot is housed at the College of Veterinary Medicine when not on duty at State home football games. For all their fierce appearance and reputation, today's mascot bulldogs are good-natured, friendly animals and favorites with children. A student wearing a bulldog suit, also answering to Bully, is part of the MSU cheerleading team and assists in stirring up State spirit at games and pep rallies.







## THE COWBELL

The most unique, and certainly the most resounding symbol of Mississippi State University tradition, is the cowbell. Despite decades of attempts by opponents and authorities to banish it from scenes of competition, diehard State fans still celebrate Bulldog victories loudly and proudly with the distinctive sound of ringing cowbells. The precise origin of the cowbell as a fixture of Mississippi State sports tradition remains unclear to this day. The best records have cowbells gradually introduced to the MSU sports scene in the late 1930s and early 1940s, coinciding with the “golden age” of Mississippi State football success prior to World War II.

The most popular legend is that during a home football game between State and arch-rival Mississippi, a Jersey cow wandered onto the playing field. Mississippi State soundly whipped the Rebels that Saturday, and State College students immediately adopted the cow as a good luck charm. Students are said to have continued bringing a cow to football games for a while, until the practice was eventually discontinued in favor of bringing just the cow’s bell.

Whatever the origin, it is certain that by the 1950s, cowbells were common at Mississippi State games, and by the 1960s were established as the special symbol of Mississippi State. In the 1960s, two MSU professors, Earl W. Terrell and Ralph L. Reeves, obliged some students by welding handles on the bells so they could be rung with much more convenience and authority. By 1963, the demand for these long-handled cowbells could not be filled by home workshops alone, so at the suggestion of Reeves, the Student Association bought bells in bulk and the Industrial Education Club agreed to weld on handles.

Today, many styles of cowbells are available on campus and around Starkville, with the top-of-the-line a heavy chrome plated model with a full Bulldog figurine handle. But experts insist the best and loudest results are produced by a classic long-handled, bicycle-grip bell made of thinner and tightly-welded shells. Cowbells decorate offices and homes of Mississippi State alumni, and are passed down through generations of Bulldog fans. But, they are not heard at Southeastern Conference games—not legally, at least—since the 1974 adoption of a conference rule against “artificial noisemakers” at football and basketball games. This has done little harm to the cowbell’s popularity, however, or to prevent cowbells from being heard outside stadiums in which the Bulldogs are playing. They can still be heard at non-conference football contests, as well as other sporting events on campus.

## HAIL STATE (FIGHT SONG)

Hail deal 'ole State!  
Fight for that victory today.  
Hit that line and tote that ball,  
Cross the goal before you fall!  
And then we'll yell, yell, yell, yell!  
For deal 'ole State we'll yell like H-E-L-L!  
Fight for Mis-si-sip-pi State,  
Win that game today!

## MAROON & WHITE (ALMA MATER)

In the heart of Mississippi  
Made by none but God's own hands  
Stately in her nat'ral splendor  
Our Alma Mater proudly stands.  
State College of Mississippi,  
Fondest mem'ries cling to thee.  
Life shall hoard they spirit ever,  
Loyal sons we'll always be.

Chorus:  
Maroon & White! Maroon & White!  
Of thee with joy we sing.  
Thy colors bright, our souls delight,  
With praise our voices ring.  
Tho' our life some pow'r may vanquish.  
Loyalty can't be o'er run;  
Honors true on thee we lavish  
Until the setting of the sun;  
Live Maroon and White for ever,  
Ne'er can evil mar they flame,  
Nothing us from thee can sever,  
Alma Mater we acclaim.

# MSU DICTIONARY

**ADD/DROP:** The process by which you can add or remove a class from your schedule.

**ADVISOR:** Person who helps you select coursework and can refer you to the appropriate campus services.

**AC:** Area Coordinator; professional member of housing and residence life.

**BLOCK:** A meal on the dining plan.

**BULLDOG BASH:** Largest free outdoor concert in Mississippi. Begins with a pep rally and is followed by several musical acts. Located in Downtown Starkville.

**BULLYMAIL:** The university assigns every student an official e-mail address of [netid@msstate.edu](mailto:netid@msstate.edu) and uses this e-mail address for official communication with students.

**CANVAS:** Learning management system (LMS) used for online instruction.

**CANVAS STUDENT MOBILE APP:** Allows access to Canvas courses from mobile devices.

**CD:** Community Director; professional member of housing and residence life.

**CSA:** Center for Student Activities. Located in the Colvard Student Union, Room 314, and is responsible for student organizations, Student Association, and Music Maker Productions.

**DAVIS WADE:** Davis Wade Stadium, home to MSU Football.

**DAWG DAYS:** Welcome events for all MSU students. Begins with MVNU2MSU (residence hall move-in day) and continues through the first few days of school.

**DIFFERENCE OF ONE:** An online portal with 300 student organizations [one.msstate.edu](http://one.msstate.edu).

**DOWNTOWN DAWG:** Shuttle bus operating on Friday and Saturday nights. Takes students from campus to various locations in Starkville.

**THE DRILL:** Traditional welcome event held on the Drill Field during the first week of classes each year.

**DRILL FIELD:** Grass lawn in the heart of the MSU campus. Built in 1909, it is anchored by Lee Hall on the north, and the Swalm Chemical Engineering building (a mirror image of Lee Hall) on the south.

**DUDY NOBLE:** Dudy Noble Field, home to MSU baseball.

**FLEX DOLLARS:** A method of payment that is included in most meal plans and can be used at any Dining Services operation on campus.

**HOLD:** If you have been notified that a hold has been placed on your records, you will need to determine the cause of the hold and remedy the situation in order to register for class. Common reasons for holds are: financial (not paying your myState account) or administrative (academic performance).

**THE HUMP:** Humphrey Coliseum, home of MSU basketball.

**ITS:** Information Technology Services.

**LIVING-LEARNING COMMUNITIES:** Residence hall communities shared by students with common interests. Examples: Shackouls Honors College and Day One.

**MVNU2MSU:** Movin' You to MSU, the opening day in the residence halls.

**MSU ID CARD:** Your key to accessing goods and services, including Dawg Dollars, meal plans, sporting events and electronic class attendance.

**MSU FALL CONVOCATION:** A convocation program emphasizing the importance of academics with the goal of each student being successful in college and life.

**MUSIC MAKERS:** Student organization responsible for MSU concerts.

**MYBANNER:** System that provides online registrations, payment of fees and access to your records.

# MSU DICTIONARY

**MYSTATE:** Online portal that offers access to MyBanner, WebCT courses and university e-mail accounts.

**NAVIGATORS:** MSU students who help freshmen navigate through their first year at MSU.

**NETID:** A unique letter and number combination assigned to you by the university. Found on the front of your MSU ID card. ex. abc123.

**MYSTATE MOBILE:** Available at no cost for both iOS and Android devices. The app provides access to general information such as campus maps and directions, shuttle routes, and the campus directory.

**NET PASSWORD:** used in conjunction with a NetID when logging in to MSU systems.

**NIGHT ROUTE:** Shuttle bus operating on Thursday, Friday and Saturday nights. Takes students from campus to various locations in Starkville.

**ORGSYNC:** OrgSync is the way to connect to organizations and communicate with other members. [one.msstate.edu](http://one.msstate.edu)

**PARENT PORTAL:** Access to view a summary of their academic information including class schedule, grades, absences, account balance, financial aid, and meal plan use.

**QUIKPAY®:** System that allows you and your authorized users (parents) to make online payments to your account.

**REGISTRAR:** Office that handles transcripts, academic calendars, academic records, and more.

**RA:** Resident Advisor. Undergraduate student living on each floor of the residence hall.

**RD:** Residence Director. Graduate student who manages the day-to-day operations of the residence hall.

**SA:** Student Association. Student body government at MSU.

**S.M.A.R.T.:** The Starkville MSU Area Rapid Transit is a free fixed route shuttle service. [smart.msstate.edu](http://smart.msstate.edu)

**THE REFLECTOR:** MSU student newspaper. Published each Tuesday and Friday during the school year.

**THE UNION:** Colvard Student Union. Home to many aspects of student life, including several food vendors and the offices of many campus organizations.

**TWO-FACTOR AUTHENTICATION (DUO):** Two-factor authentication adds another layer of security when logging in to MSU systems. The first factor required to login is something you know, i.e. your NetID/NetPassword. The second factor is something you have, typically your smartphone or tablet.

**WMSV:** MSU's radio station. 91.1 FM.





## STUDENT CONDUCT

The Dean of Students' Office (DOS) is responsible for adjudicating cases of alleged individual and organizational violations of the code of student conduct.

The DOS staff addresses behavior in a manner consistent with core values of fairness, honesty and integrity while promoting the university's educational mission. Our mission is to promote responsibility and standards of conduct for Mississippi State students through a fair and objective process. By fostering concepts of fairness, civility and encouraging personal responsibility, we are striving to ensure a safe and healthy university community by:

- Administering the Code of Student Conduct while ensuring the principles of due process.
- Serving as a consultant and resource for students, faculty, staff and parents concerning student conduct expectations and rights including university policies and procedures related to student life.
- Assisting and counseling victims and those accused of conduct violations.
- Offering conflict and dispute management.

## ALCOHOL AND DRUGS

Mississippi State prohibits the unlawful possession, use or distribution of illicit drugs and alcohol on university property. Any student failing to observe these policies will be subject to institutional sanctions in accordance with established disciplinary procedures including suspension or expulsion. In addition to university sanctions, a student found in violation of the drug and alcohol policy may be referred to the appropriate authorities for prosecution. Under local, state and federal laws, legal sanctions may include fine, imprisonment or both.

Reports of possible policy violations and other alcohol-related incidents are forwarded to the Dean of Students' Office. Students found to have violated the alcohol policy may be required to attend alcohol education classes, undergo individual alcohol assessments, perform community service, and/or have their parents or legal guardians notified. The office also notifies parents in alcohol and drug cases in which an involved student is under the age of 21.

Students are coming to an environment in which they will likely be exposed to alcohol and other drugs. Some may not make the smartest choices in dealing with related situations that may arise. DOS staff members are available to both you and your student for discussion of any issue.

## WEAPON POSSESSION

While Mississippi State understands that many are hunters, its students should be aware that possession of any weapon on campus represents a serious concern. Under most circumstances, possession violates both university policy and state law. Because it is a felony, any student found in possession within campus boundaries may be subject to arrest and confiscation of the weapon. Additionally, an arrested student may immediately be suspended from classes, pending a disciplinary hearing.



# BULLDOG *checklist*



Between Orientation and the first day of class, we believe it's important for you and your student to spend some time together discussing their transition to university life. Please take a moment to go over the following information, ensuring your student is positioned for a successful year. As always, you are welcome to contact the Office of Parent and Family Services if you ever have questions or need guidance.

## Encourage your student to:

- SYNC Microsoft 365 (student email account) with their phone (and check email daily)
- Make sure Banner info is always updated with current contact information (student info)
- Enroll in Duo multi-factor authentication (details explained at [servicedesk.msstate.edu](https://servicedesk.msstate.edu))
- Download CANVAS app
- Use a calendar daily (ex. syllabus due dates, advising appointments, academic calendar, holidays, finals)
- Stick with their schedule. **DO NOT** drop/add classes without academic advisor approval
- Get to know their Navigator at [freshman.msstate.edu](https://freshman.msstate.edu) (if a freshman) and Advisor
- Attend class and purchase **ALL** class materials (books, access codes, supplies, etc.)  
*Reduce the cost of traditional textbooks by up to 50% with Bulldog Bundle!*
- Read/Follow syllabus & get to know their professors
- Only park in designated spots to avoid tickets ([transportation.msstate.edu](https://transportation.msstate.edu))
- Get involved and make friends
- Be familiar with scholarship and financial aid requirements
- Use student resources such as:

Career Center  
Center for Student Activities  
Center for Academic Excellence  
College/Departmental Tutoring

Dean of Students' Office  
Holmes Cultural Diversity Center  
The Math Domain  
Mitchell Memorial Library

Money Management Center  
Undeclared  
The Writing Center

## Talk to your student about:

- Being themselves
- Asking for help when needed
- Being responsible (sleep, eat, and exercise)
- Being respectful (roommate expectations/classroom conduct)
- Expectations and Consequences (G.P.A., scholarship & financial aid requirements, behavior, money, etc.)
- Campus Safety and Awareness ([emergency.msstate.edu](https://emergency.msstate.edu))
- Communication Expectations (frequency of phone calls, texts, emails, etc.)
- Time Management and Managing Freedom
- Code of Student Conduct ([policies.msstate.edu/policy/91100](https://policies.msstate.edu/policy/91100))

❑ **Important dates, fees and deadlines:**

- Tuition Dates: Fall Semester (**August 1**) | Spring Semester (**January 1**)  
*Enroll in a payment plan or pay the full balance on your student's account by the above deadline.*
- Academic Calendar: [registrar.msstate.edu/calendars/academic-calendar](http://registrar.msstate.edu/calendars/academic-calendar)  
**August 27:** Last day to drop a course *without a grade* (Withdraw from the University - 90% refund)  
**October 14:** Last day to drop a course *with a grade* (0% refund)  
**November 15:** Last day to withdraw from the semester
- Refund Schedule: [registrar.msstate.edu/files/withdrawal-refund-schedule.pdf](http://registrar.msstate.edu/files/withdrawal-refund-schedule.pdf)
- Tuition Costs: [controller.msstate.edu/accountservices/tuition](http://controller.msstate.edu/accountservices/tuition)
- Student Financial Aid: [sfa.msstate.edu](http://sfa.msstate.edu)
- State Financial Aid: [msfinancialaid.org](http://msfinancialaid.org)

	ITEMS TO CONSIDER	SEMESTER COST
MISSISSIPPI STATE STUDENT ACCOUNT	Family Contribution	
	Student Income	
	Scholarships	
	Financial Aid (federal grants/loans, state grants)	
	<b>Total Student Funding</b>	
	Tuition/Fees (may include Printing and Lab fees)	
	Books - Bulldog Bundle (\$20 per credit)	
	Housing (on-campus/off-campus)	
	Dining Plan ( <a href="http://dining.msstate.edu">dining.msstate.edu</a> )	
	Parking Permit	
	Football Tickets	
Longest Student Health Center		
<b>Total Mississippi State Student Account Expenses</b>		
MISCELLANEOUS	Groceries/Eating out	
	Renters' Insurance	
	Cell Phone	
	Off-Campus Housing Utilities	
	Entertainment	
	Clothing and Laundry	
	Automobile (payment, insurance, maintenance, gas, etc.)	
	Student Involvement (i.e. organizational dues)	
	Other	
<b>Total Miscellaneous Expenses</b>		

All of these expenses will be credited or charged to the centralized Student Account.

None of these expenses will be credited or charged to the centralized Student Account.



- Discuss the budget.**  
Make sure your student makes you an Authorized Payer (QuikPAY) so you can access account details.  
[controller.msstate.edu/accountservices/paymentinfo/authorizedpayer](http://controller.msstate.edu/accountservices/paymentinfo/authorizedpayer)
  
- Have your student grant you access to the Parent Portal.**  
Visit [family.msstate.edu](http://family.msstate.edu) and click on the Parent Portal information box to find out how your student can grant you access.
  
- Submit Proof of Immunizations to:**  
Longest Student Health Center | P.O. Box 6338 | Mississippi State, MS 39762  
[healthcenter.msstate.edu](http://healthcenter.msstate.edu)
  
- Submit FINAL transcript from previous institution(s) to:**  
Office of Admissions & Scholarships | P.O. Box 6334 | Mississippi State, MS 39762  
[admissions.msstate.edu](http://admissions.msstate.edu)  
*Final transcripts should clearly identify the date of graduation and final grades.*
  
- Submit Advanced Placement (AP) and International Baccalaureate (IB) test scores to:**  
Office of the Registrar | P.O. Box 5268 | Mississippi State, MS 39762  
[registrar.msstate.edu](http://registrar.msstate.edu)
  
- Mississippi State Family Hub:**  
Keep up with important communications, academic resources, and more by registering at [family.msstate.edu/get-connected](http://family.msstate.edu/get-connected).

## ACCESS TO PARENT AND FAMILY RELATED RESOURCES

FAMILY.MSSTATE.EDU

### PARENT PORTAL\*

The Parent Portal provides a snapshot of general account details and recorded progress grades, reported absences, class schedules, and meal plan balances.



Requires a user ID (email address) to login

### QUIKPAY\*

QuikPAY allows authorized payers to review billing statements, account transactions, and make payments.



Requires a login name to login (this is not an email address)


### MISSISSIPPI STATE FAMILY HUB

The Mississippi State Family Hub is our communication platform providing personalized newsletters and 24/7 access to information, news and resources.



Requires a user email to login

\*Make sure your student authorizes you to access BOTH QuikPAY and Parent Portal. These are two different platforms! Bookmark the login pages and securely store your login information for easy access.



Is your student considering living off-campus? Visit [ocss.msstate.edu](https://ocss.msstate.edu) for information and resources.





As a comprehensive institution of higher learning, Mississippi State has everything students could want in their “home away from home.” In addition to beautiful, comfortable residence halls, the campus is home to numerous dining facilities. A shuttle system gets students around quickly without having to search for a parking spot.

**Mississippi State offers two different styles of residence halls – New Construction and Traditional.**

Our Traditional-style residence halls continue to be a favorite of our students here at Mississippi State. Our students tell us day in and day out that living in Traditional halls gives them the opportunity to create lifelong friendships, build a stronger connection with the university, and establish a stronger sense of belonging.

Traditional halls have most of the same amenities as New Construction halls on campus while providing more affordable living accommodations for students.

New Construction halls have restrooms within the residence hall rooms, and Traditional halls have community-style restrooms in each hallway.

**New Construction**

- Deavenport Hall*
- Dogwood Hall*
- Griffis Hall*
- Hurst Hall*
- Magnolia Hall*
- Moseley Hall*
- Nunnelee Hall*
- Oak Hall*
- Ruby Hall*

**Traditional Halls**

- Cresswell Hall (female only)*
- Critz Hall*
- Hathorn Hall*
- Herbert Hall*
- Hull Hall*
- McKee Hall (male only)*
- Sessums Hall (female only)*

**Visit [housing.msstate.edu](https://housing.msstate.edu) to explore all of the campus residence halls and find details about rates and amenities.**

*\* As of April 2024*





## HOUSING AND RESIDENCE LIFE

662.325.3555 | HOUSING.MSSTATE.EDU | @MSSTATE\_HOUSING | DOGWOOD HALL

Residence halls at Mississippi State offer the opportunity to meet new friends, get involved, and experience educational and social events. Our staff is dedicated and trained to assist students during their transition to college life. Approved early arrivals (Famous Maroon Band, New Maroon Camp, Panhellenic Council, etc.) will move in August 10-11.

# WELCOME HOME

STATE

**AUGUST 17**  
**MVNU2MSU**  
**2024**

As we approach move-in, students will receive communication from our new Full Measure system with more details.

Consider the Eugene Butler Guest House for your next overnight visit to Starkville, conveniently located next to Davis Wade Stadium. For more information, visit [guestservices.msstate.edu](http://guestservices.msstate.edu) or call us at **662.325.4140**.

## RECOMMENDED THINGS TO BRING CHECKLIST:

### BEDDING

- Pillows
- Mattress Pad
- Mattress Topper
- Twin XL Sheets
- Comforter
- Blanket/Throw

### BATH

- Towels
- Wash Cloths
- Shower Soap
- Shower Tote
- Shower Shoes
- Wastebasket

### CLEANING

- Laundry Basket
- Vacuum
- Cleaning Supplies
- Broom & Dust Pan
- Laundry Soap
- Dryer Sheets

### DINING

- Dishes/Cups
- Utensils
- Water Bottle
- Travel Mug
- Chip Clips
- Dish Soap
- Sponge

### DEVICES

- Laptop
- Television
- Headphones
- Ethernet Cord
- Chargers
- Lamp & Fan
- Power Strips

### STUDYING

- Notebooks
- Textbooks
- Pens/Pencils
- Highlighters
- Folders
- Planner

### PERSONAL

- Driver's License/  
Photo ID
- MSU ID
- Debit/Credit Card
- Snacks
- Coffee Maker
- Reed Diffuser/  
Air Freshener

### CLOTHING

- Shirts
- Pants/Shorts
- Gym Clothes
- Pajamas
- Shoes/Socks
- Rain Coats
- Hangers

### JUST IN CASE

- Batteries
- First Aid Kit
- Flashlight
- Tool Kit
- Light Bulbs (for Lamp)
- Umbrella
- Storage Bins/  
Organizers



## HOUSING AND RESIDENCE LIFE STAFF

Our department's staff is dedicated and trained to assist students during their transition to college life. The front desks of each hall are staffed seven days a week by trained student Information Assistants (IAs). Your student will also have a trained student Resident Advisor (RA) located on their hallway to help with housing needs. Community Directors (CDs) and Graduate Resident Directors (GRDs) are full-time, trained professionals who oversee IAs, RAs, and all hall activity.

## MAINTENANCE REQUESTS/FIX-ITS

If a student finds something in their room is broken or needs attention, they can submit a fix-it ticket online at any time by logging on to their housing portal at [my.housing.msstate.edu](http://my.housing.msstate.edu).

## BREAKS

The residence halls are open from fall opening day to spring closing day except during the University's Winter Break. More information regarding needing to extend your stay over Winter break and check-out processes can be found at [housing.msstate.edu](http://housing.msstate.edu).

## RSVP

Current residents have an opportunity to express their interest to continue living on campus through our Renewal Selection Verification Process (RSVP). Additional information and instruction are shared with residents in late fall.

## SAFETY AND SECURITY

The safety and security of students is of the utmost importance. Residents must have their MSU ID card to access the residence halls 24 hours a day. Card readers use MSU ID cards to allow those residents who live in that hall, or in some instances, on a specific floor to enter the building, floor, or hallway. Guests must use the front entrance, check in at the front desk, and always be escorted by their host.

## VISITATION

Visitation hours are daily from 10 - 2 a.m. Violation of the visitation policy may result in the loss of visitation privilege. Students who want overnight guests of the same sex must request an overnight guest form from their front desk and have their roommate and RA sign/approve it.



## ROOMMATE AND ROOM CHANGES

Community starts in the halls so students experiencing a college roommate is exciting and significant. Although this is an exciting time, students may find themselves looking for a new roommate or wanting a room change. If this happens, students are encouraged to first meet with their RA, then the GRD or CD to explore all options.

## KITCHENS

Our residence halls have common kitchens for students to use. Kitchens are available for use 24/7. Most hall front desks have pots and pans available for students to check out. Students are expected to clean up after each use.

## LAUNDRY

Each residence hall has at least one community laundry room with washers and dryers. The machines accept quarters and credit or debit cards. It costs \$1.50 to wash and \$1.50 to dry. We also have an app, **WaveRider**, where students can load money to use the washers and dryers, see what units are open, and receive notifications when the laundry cycle is finished.

## ADDITIONAL FURNITURE

Furnishings for each room, along with room and furniture measurements, can be found at [housing.msstate.edu](https://housing.msstate.edu). Students are welcome to bring items that will make the space in their rooms feel like home, with some exceptions. The standard furniture provided by Mississippi State may not be removed or replaced by any additional furniture.

## MOVE-IN CHECKLIST

A helpful move-in checklist can be found on [page 14](#) or at [housing.msstate.edu/future-residents/moving-in](https://housing.msstate.edu/future-residents/moving-in).

## INTERNET ACCESS

Wi-Fi and Ethernet access is provided in each room. Wireless routers are not permitted.







## MAIL AND PACKAGE DELIVERY SERVICES

All students residing on campus are strongly encouraged to have a United States Postal Service (USPS) box to receive mail and packages sent via the carrier. To obtain a box, a student must complete an application and turn it in to USPS staff. Two forms of identification are required to apply. Students may also apply online at [usps.com](https://usps.com) using zip code **39762**. Fees begin at \$65, depending on the box size, and two keys are provided to each box holder.

Mail and packages using the U.S. Postal Service should be addressed in the following manner:

Sally Student  
P.O. Box \_\_\_\_  
Mississippi State, MS 39762

The U.S. Postal service does not include independent carriers FedEx, UPS or DHL. Packages may be sent directly to the residence halls using FedEx, UPS or DHL. Addresses for these should be labeled in the following manner:

Sam Student  
\_\_\_\_ Residence Hall  
Room \_\_\_\_  
Street Address (see below)  
Mississippi State, MS 39762\*

*\*As with USPS boxes, all campus residence halls are at Mississippi State, MS 39762.*

Mailing addresses for campus residence facilities include:

**College View Apartments**, 385 College View Drive  
**Cresswell Hall**, 36 Magruder Street  
**Critz Hall**, 685 Barr Avenue  
**Deavenport Hall**, 220 Bailey Howell Drive  
**Dogwood Hall**, 705 George Perry Street  
**Griffis Hall**, 500 Bailey Howell Drive  
**Hathorn Hall**, 76 Magruder Street  
**Herbert Hall**, 170 Herbert Street  
**Hull Hall**, 85 Walker Road

**Hurst Hall**, 95 Hurst Lane  
**Magnolia Hall**, 15 Morgan Avenue  
**Moseley Hall**, 55 Magruder Street  
**McKee Hall**, 450 Lee Boulevard  
**Nunnelee Hall**, 215 Hurst Lane  
**Oak Hall**, 205 Magruder Street  
**Ruby Hall**, 75 Hurst Lane  
**Sessums Hall**, 459 Lee Boulevard

*Letters or magazines addressed to the residence halls will be returned to sender.*

# DINING SERVICES

662.325.7120 | DINING.MSSTATE.EDU | @MSSTATEDINING

## RESIDENTIAL DINING LOCATIONS AND OPTIONS

We have over 20 on-campus dining locations for students to choose from.



### PERRY HALL (Under Renovation)

While Perry Hall is currently undergoing renovation for the Fall 24 - Spring 25 Academic Year, accommodations have been made to make sure you will still get all the best Perry has to offer.

#### PERRY-TO-GO

Conveniently located in the Colvard Student Union, Perry-To-Go offers an on-the-go Perry Menu for lunch.

#### PERRY FOOD TRUCK

It's Perry in food truck form! Find it in the YMCA Plaza, Monday - Friday.



### FRESH FOOD COMPANY

All-you-care-to-eat location



### MCARTHUR CAFE

Block meal lunch option

### NATIONAL RETAILERS



### LOCAL RETAILERS



### CONVENIENCE RETAILERS



### MOBILE ORDERING

Download the Grubhub Mobile Ordering App and pick it up on your way. Use your Meal Plan to order. Credit/Debit accepted as well.



## HOW DO MEAL PLANS WORK?

**Block Meals:** Block Meals are used to eat at Fresh Food Company, Perry-To-Go, Perry Food Truck, and McArthur Cafe. Your Student ID is your Block Meal Pass - because less cards equals less stress. One swipe in at the register equals an all-you-care-to-eat meal at Fresh Food Company or a set meal at McArthur Cafe, Perry-To-Go, or Perry Food Truck. Block Meals expire at the end of each semester. Weekly Block Meal Plans provide you with a set amount of Block Meals per week; Block 60 and Block 30 Meal Plans provide you with a set amount of Block Meals per semester.

**Meal Equivalency:** Block Meals normally used at the dining halls can also be used once a day at our retail locations (Chick-fil-A, Subway, etc.). Meal Equivalency Block Meals are equal to \$8 in Retail Value.

## DAWG DOLLARS

Dawg Dollars are a dollar-for-dollar value and can be used at any dining location on campus, including food trucks withing the Mississippi State Dining Food Truck Program. Dawg Dollars can also be used at select concession stands at football and basketball venues, Barnes & Noble Cafe, and more. For all locations that accept Dawg Dollars, visit [dining.msstate.edu](http://dining.msstate.edu).

## MEAL PLANS

	WEEKLY 21	WEEKLY 14	WEEKLY 7	BLOCK 60	BLOCK 30	\$200 DAWG DOLLARS
BLOCK MEALS PER WEEK	21	14	7	60 PER SEMESTER	30 PER SEMESTER	0
AVG. MEALS PER DAY	3	2	1	3 PER WEEK	2 PER WEEK	N/A
DAILY MEAL EQUIVALENCY	1	1	1	1	1	0
DAWG DOLLARS	CAN BE ADDED SEPARATELY (CHARGED SEPARATELY)					\$200
COST PER SEMESTER	\$2,143	\$1,806	\$1,127	\$679	\$355	\$200

## DIETARY RESTRICTIONS

Our chefs and registered dietitians are trained and eager to assist with any dietary restrictions or concerns you may have. Set up a one-on-one consultation to go over your specific dietary needs with Mississippi State's Registered Dietitian, Jill Hamilton, RDN, by emailing [hamilton-jill1@aramark.com](mailto:hamilton-jill1@aramark.com). Scan the QR code to fill out a dietary restriction form and start the process.



### FIRST-TIME COLLEGE STUDENTS

**First-Time College Students are automatically enrolled in the Weekly 21 Meal Plan (21 block meals per week).**

- Includes incoming freshman students
- Weekly 21 covers all 3 meals, 7 days a week throughout the semester.
- No sign up required - you can grab your Student ID, tap, and go when you arrive.
- Freshmen are able to change to the Weekly 14 Meal Plan within the first 2 weeks of either semester (Weekly 14 covers 2 meals a day throughout the semester).

**First-Time College Students are automatically enrolled in \$300 Dawg Dollars each semester.**

*Freshmen going Greek have an additional Meal Plan option.*

### UPPER DIVISION STUDENTS

- Includes sophomore, junior, senior, and transfer students
- Select from 6 different Meal Plan options (from the Weekly 21 to the \$200 Dawg Dollars Plan).
- You are able to choose a plan that fits your schedule and lifestyle.
- Whether on or off campus, there's a plan for every student.



# BARNES & NOBLE AT MSU

662.325.8361 | MSSTATE.BNCOLLEGE.COM | @BNCOLLEGEMSU

CULLIS WADE DEPOT - 75 B.S. HOOD DRIVE

The campus bookstore provides the flexibility and convenience Mississippi State students need to be ready for class. To best suit their study needs, the bookstore offers options to rent or purchase textbooks or e-textbooks. A wide selection of general reading and reference books also are available for purchase, as are school supplies, campus-life products, and Mississippi State clothing and gifts. Additionally, the bookstore operates Bully's Café, proudly serving Starbucks beverages and food options for any time of the day.



## MSU'S BULLDOG BUNDLE

MSSTATE.EDU/BULLDOGBUNDLE  
M204@BNCOLLEGE.COM

Through a partnership with Barnes & Noble, MSU's Bulldog Bundle allows students to receive required course materials for all classes for a flat fee, regardless of how much each individual textbook or digital access would cost to rent or purchase separately.



All undergraduate students, excluding Gulf Coast Engineering, are automatically enrolled and provided access to all required textbooks, lab manuals, access codes and electronic book versions in a convenient bundle before the first day of class.



All electronic books and access codes will be delivered through the student's Canvas page. All printed titles can be picked up in store or shipped to an address provided for a small fee.



All printed books, not listed as consumables, will be a rental on the student's account and must be returned by the last day of finals.



Cost of Bulldog Bundle is \$20 per credit hour and will be applied to the student's account at the same time tuition is charged.



Students will receive a welcome email from Barnes & Noble 35 days before classes begin outlining next steps and a second email 30 days out instructing them to select their delivery preference.



If students choose not to participate, they must opt out each semester. If they opt out and change their mind, they have until the last day to add a course to enter back into the program.



Downloading the My College Bookstore app will enable the tracking of online orders, as well as receiving rental reminders and B&N special offers.



# CAREER CENTER

662.325.3344 | CAREER.MSSTATE.EDU | 300 MONTGOMERY HALL

# TOP 5 THINGS TO KNOW

*Here are some common services we offer:*

1.

## CONNECTIONS ACCOUNT

FOR JOB SEARCH & CAREER-RELATED EVENTS/WORKSHOPS  
*Once registered for classes, you'll have full access to your account.*

2.

## CAREER ADVISORS

FOR ONE-ON-ONE APPOINTMENTS  
*To set up an appointment, give us a call at 662.325.3344 or drop in our office!*

3.

## CO-OP AND INTERNSHIP PROGRAM

TO GAIN PRACTICAL WORK EXPERIENCE  
*For information on the types of programs we offer, please visit [career.msstate.edu/coop/program\\_options](http://career.msstate.edu/coop/program_options).*

4.

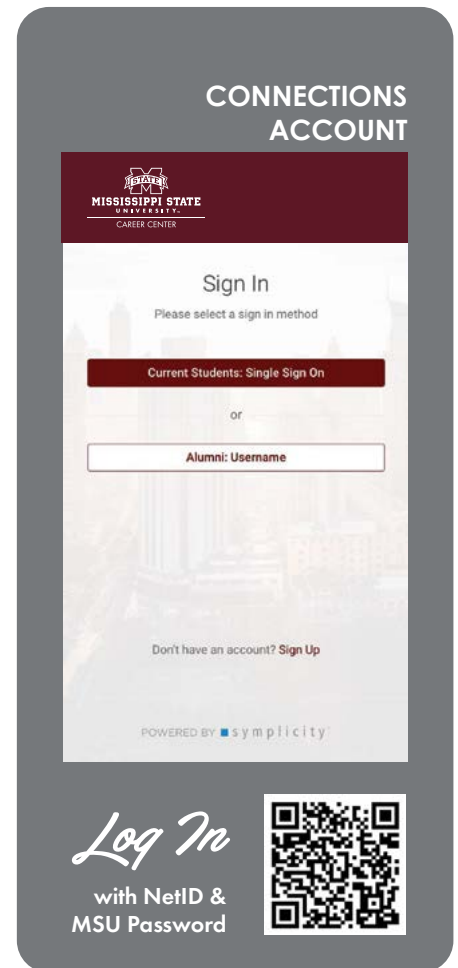
## CAREER ASSESSMENTS

TO CHOOSE OR CHANGE MAJORS  
*To see the assessments we provide, please visit [career.msstate.edu/students/discover/assessments](http://career.msstate.edu/students/discover/assessments).*

5.

## DOCUMENT CRITIQUES

TO SPRUCE UP PROFESSIONAL DOCUMENTS  
*We assist with resumé, cover letters, and personal statements.*



*Visit us* on the 3rd floor of Montgomery Hall, located next to the Hail State sign.



## PART-TIME JOBS FOR STUDENTS

The Part-Time Job Fair at the beginning of the fall semester is a great way to identify employment opportunities on campus and within the Starkville community for the upcoming semester or academic year. Students can often apply and interview on the spot.

## TOOLS TO FIND CO-OPS, INTERNSHIPS, AND JOBS

Students can also search jobs on Connections, Mississippi State's online job board, for opportunities. Connections is a great place to view upcoming career fairs, company information sessions, and Career Center workshops. Students can access their Connections account by logging into [connections.msstate.edu](https://connections.msstate.edu) with their net ID and password once they have registered for classes.

## HOW TO DECLARE OR CHANGE A MAJOR

Students can meet with the Career Center's Career Advisor dedicated to helping undeclared and undecided students through career assessments, such as the Strong Interest Inventory and Typefocus. Through an appointment with your career advisor, these assessments can help to clarify interests in possible majors and careers and help to narrow options. The Mississippi State Career Center is ready to help students decide on a major or career that aligns with their interests, personality, and overall goals.

## HOW THE CAREER CENTER CAN HELP ALONG THE WAY

The Career Center is here to assist students in their career journey no matter where they are, some of our services include:

- Resumé and cover letter writing
- Major and career exploration
- Interview preparation
- Job searching (including internship, co-op, and part-time employment)
- Preparing for graduate or professional school
- Navigating the workplace as a new professional

## WE ARE HERE TO HELP

Students can drop by Monday through Friday from 9 a.m. - 4 p.m. to visit Career Ambassadors who are available to help them with immediate needs or schedule an appointment with their Career Advisor at the front desk. Our office is in Montgomery Hall, 3rd floor, next to the Hail State sign. Please stop by, call **662.325.3344**, or visit our website, [career.msstate.edu](https://career.msstate.edu), for more information.





**CAMPUS ROUTES**

*Free to Ride*

**Monday - Friday**

**7 a.m. to 6 p.m.**

- Mississippi State North
- Mississippi State Central
- Mississippi State South
- Starkville East
- Blackjack

**CAMPUS/CITY ROUTES**

*Also Free*

**Monday - Saturday**

**7 a.m. to 8 p.m.**

- Starkville North
- Starkville Central
- Starkville South
- Starkville Connector

**GOLDEN TRIANGLE AIRPORT ROUTE**

*Yep, Free*

**Monday - Sunday**

**Based on flight arrivals and departures**

- Golden Triangle Regional Airport

**LIVE BUS TRACKING**

Mobile Device

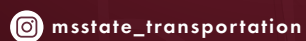
**TransLoc App**

(iPhone or Android)

**Download From App Store**  
**Select Starkville MSU Area Rapid Transit**



For the most up-to-date information, visit [transportation.msstate.edu](http://transportation.msstate.edu) and follow us on social media.



**LINKING YOUR CITY & CAMPUS**



THE S.M.A.R.T. BUS SYSTEM IS PART OF THE DEPARTMENT OF TRANSPORTATION.



## TRANSPORTATION

662.325.3526 | [TRANSPORTATION.MSSTATE.EDU](https://TRANSPORTATION.MSSTATE.EDU)

412 EAST LEE BOULEVARD | ROBERTS BUILDING

The Department of Transportation works to ensure safe and reliable campus parking for students, staff, faculty and visitors.

### IMPORTANT PARKING INFORMATION

- Every vehicle must have a valid MSU digital parking permit (*students, staff, visitors, moms and dads, alumni, etc.*).
- Residential and Greek students will receive a complimentary decal for game day parking purposes.
- Vehicles are digitally permitted through their license plate and two vehicles can be linked to the same annual digital permit.
- All vehicles must be linked to an active digital permit. For more information on vehicle management, please visit [transportation.msstate.edu](https://transportation.msstate.edu).
- Every vehicle must be parked in its designated zone.

### STUDENT PERMITS

- **PERMIT SALE DATES:**  
*Residential Students: July 17 | Commuter Students: July 24*
- Permits must be purchased online at [myparking.msstate.edu](https://myparking.msstate.edu).
- Permits must be mailed to a valid U.S. postal address (student's residence hall room is not a valid postal address).
- Residential students will receive a windshield credential for the purpose of reentry to your designated zone on game days.

### ADDITIONAL TIMED AND METERED AREAS

- **Timed Areas:** Old Main Academic, Center Garage, North Parking Garage
- **Metered Areas:** Union, Roberts Building
- All handicap placards must be registered. Students may register their placard via their parking portal at [myparking.msstate.edu](https://myparking.msstate.edu) or at the Customer Service Desk in the Roberts Building.





# INTERNATIONAL STUDENTS

Home to over 20,000 students, Mississippi State University (MSU) offers an atmosphere of learning, service, and research. MSU provides a strong academic environment that helps students reach their academic goals. Whether attending MSU for an undergraduate degree, graduate studies, or improving English at the English Language Institute, students find Mississippi State offers a combination of diversity and a friendly, supportive atmosphere. The International Institute works to broaden and deepen MSU's partnerships with universities and other organizations abroad. Currently, MSU has over 70 partner schools abroad allowing our students and scholars to work with and learn from a wide variety of international experts. Maintaining these activities and relationships helps to expand MSU's influence worldwide while increasing capacity domestically. As part of our commitment to internationalizing campus, the Institute works with sponsoring agencies, such as the Fulbright Foundation, to attract some of the brightest students and scholars from around the world to collaborate with and broaden the perspectives of our students and faculty. The International Institute works with Mississippi State faculty and students to change lives, change perspectives, and change the world. Mississippi State looks forward to welcoming you to the "People's University."



# INTERNATIONAL STUDENT RESOURCES

## OFF-CAMPUS STUDENT SERVICES OFFICE

Off-Campus Student Services (OCSS) at Mississippi State University (MSU) serves as a connection for students, faculty, and staff to the off-campus community and all it has to offer. OCSS is housed in the Dean of Students' Office and is part of the Division of Student Affairs. Our goal is to provide the university with valuable resources to assist them in transitioning to an off-campus environment. Whether you are moving off campus or you have already made the move, let (OCSS) help. Make the most of your MSU experience by using OCSS's resources and services that are especially designed with the off-campus resident in mind.

Making the move off campus is an exciting time in your life. MSU hopes that living in Starkville will provide a memorable and rewarding living experience for students, faculty, and staff. The OCSS guide was developed to assist you in becoming familiar with the various resources on and off campus. As you become a part of the Starkville community, we encourage you to educate yourself about your rights and responsibilities as a resident and to learn about the numerous resources available. Please access the guide online at [ocss.msstate.edu](http://ocss.msstate.edu) to learn more about living off-campus.

For more information on OCSS visit page 72.

## INTERNATIONAL SERVICES OFFICE

Designed to serve the international student and scholar community in their regulatory compliance obligations with both the federal government and Mississippi State University.

## STUDENT AND EXCHANGE VISITORS SYSTEM

The Student and Exchange Visitor System (SEVIS) is the system that the United States Citizenship and Immigration Service (USCIS) implemented for electronic reporting and record keeping as dictated by a 1996 law. I-20 (document for F status and DS-2019 forms (document for J status) are prepared using SEVIS. Individuals needing F-1, F-2, J-1 or J-2 status must have their information entered into SEVIS. The International Services office on campus is the primary unit with the ability to enter records into SEVIS, but the student/scholar/dependent has a legal obligation to report some of the information to IS. The USCIS says that it is still the non-immigrant's responsibility to make sure that he/she stays in compliance with the laws at all times. The International Services office wants all MSU students and scholars to be able to focus on their studies and research so it is very important that you stay in contact with this office. In order to make sure all documents are in order, please visit International Services before planning any out of the country trips for yourself or your family members.

The following events require that you inform the International Services office in order to retain legal status in the United States.

Change of address - All changes of address for students and their dependents must be reported within 10 days of moving. Even if you are just moving down the hall to a different room in the residence hall, you must inform International Services of the change.

Legal name change for the student or his/her dependents must be reported within 10 days.

Any changes (major, funding, program dates, etc.) to the information listed on the I-20 or DS-2019.





## GENERAL DOCUMENTS

### Passport

Keep your passport valid. ISO recommends that students apply for renewal of their passport at least 6 months prior to expiration.

### I-94

This document shows that you entered the country in a legal status. I-94 is now electronic and can be accessed through [cbp.gov/I94](http://cbp.gov/I94). I-94 should have your class of admission (F-1, J-1, etc.), the day you entered, and an expiration date. For F-1's and J-1's, the expiration should say D/S - Duration of Status - and means that you may remain in the U.S. as long as you continue to have a valid I-20/DS-2019 and pursue the objective listed on that particular document. Anyone who has a specific date written in the space for expiration should bring this to the attention of the International Services office. Any student who is unable to locate their I-94 or who have incorrect information on the I-94 should meet with International Services to have it corrected.

### I-20/DS-2019

This document shows program of study, finances, and start and end dates. End date is very important. If you will not graduate by the end date listed you must request a program extension prior to the expiration date.

Visit [international.msstate.edu](http://international.msstate.edu) for details.

### VISA

- Required for entry into the U.S. except for Canadian citizens.
- Shows the dates, number of times, and purpose for which it can be used.
- Might expire while you are here and that is ok. It only needs to be valid at the time of each entry to the U.S.
- Renewal cannot be done within the U.S. Can only be done by application at a U.S. consulate/embassy. Highly recommended that the request be made in the home country.

### GRACE PERIODS

The grace period refers to a period of time during which you are able to stay in the U.S. to prepare for departure or a change to another status. Employment is not allowed during the grace period.

#### F-Status

- 60 days following graduation/completion of program objective
- 15 days after authorized (by International Services) withdrawal from the university
- 0 days for unauthorized withdrawal

#### J –Status

- 30 days following graduation/completion of program objective

## EMPLOYMENT

### F-1 and J-1

- Work is limited to 20 hours per week while school is in session.
- Work required for an assistantship counts toward the 20-hour limit.
- Work hours may not be averaged to equal 20 hours per week.  
*Example: It is not ok to work 30 hours one week and 10 the next.*
- Work must be on campus.
- You may begin work before obtaining a social security number, but you must have the social security number before the first paycheck will be issued.
- During official school breaks, work may be full-time.
- The Career Center in Montgomery Hall maintains a listing of student job openings. Visit [career.msstate.edu/students](http://career.msstate.edu/students).

## ENROLLMENT REQUIREMENTS

Graduate F-1 or J-1: 9 hours each fall and spring term

Undergraduate F-1 or J-1: 12 hours during each fall and spring term

Exceptions to the above are limited and require permission from the International Services office. Examples include:

- Medical reasons must be documented and recommended by a doctor and approved by the International Service office.
- Summer sessions — do not require full time enrollment unless your documentation reflects a summer start date.
- During the last semester of study — only need to take what is required in order to graduate.

## TRAVEL

- Must get travel signature from International Services on your particular document.
- For J's, the travel signature must come from the office that issued the DS-2019.
- Check passport validity.
- Check visa validity. If your U.S. visa will expire prior to your planned re-entry, you must be prepared to renew the visa during this trip. Visas cannot be renewed within the U.S.







## SOCIAL SECURITY NUMBER (SSN)

Procedure: Obtaining evidence of on-campus employment from the employer and DSO

### Letter from Employer

The SSA will accept a letter or statement from the F-1 student's employer if the F-1 student has not yet started working. An original signature is required and the signatory's title should be shown on the letter. The statement may be typed or written on school letterhead. The statement will contain the employer's name, name of student and the nature of the student's on-campus job.

### DSO Activation

New students who need to obtain an SSN for an on-campus job, must first ensure that their SEVIS record has been activated. Once the record is activated, a student can then apply for the number. Students who have been enrolled at MSU for at least 1 semester do not require this additional step.

### Requirements for getting a SSN:

We suggest you wait until you are in the United States for at least 10 days before you apply for a Social Security number. Take the original documents (I-20, Passport, I-94, offer letter from the employer) and make sure you register for a full course load.

1089C Stark Road  
Starkville, MS 39759  
9:00 a.m. - 3:00 p.m. (M, T, Th, F)  
9:00 a.m. - 12:00 p.m. (W)  
662.323.9211

## OFFICE OF STUDY ABROAD

The Office of Study Abroad (OSA) offers the students and faculty of Mississippi State University the opportunity to explore academic opportunities outside of the United States. Nearly all programs offer academic credit that will apply toward a degree at MSU. Travel the world. Learn new languages and cultures. Develop skills and experiences outside the traditional classroom. Make new friends!

## ENGLISH LANGUAGE INSTITUTE

365 Barr Avenue | P.O. Box 6268  
Mississippi State, MS 39762  
esl@msstate.edu  
662.323.2648

The English Language Institute (ESI) at Mississippi State University offers international students an intensive English language program, with more than 20 hours per week of English language instruction in a traditional southern setting. We want to help you learn English and get involved in the community so that you can get a degree at MSU or go back home with the advanced English skills and USA culture experiences to advance your career. The English Language Institute exists to provide high-quality intensive English instruction enabling students to achieve their individual goals.



## ON-CAMPUS INVOLVEMENT

Here's a list of a few international/cultural organizations on campus:

- African Student Association
- Association of Chinese Students and Scholars
- Bangladesh Association
- Black Student Association
- Delta Xi Phi Multicultural Sorority, Inc.
- Hillel-Jewish Life on Campus
- I.D.E.A.L. Woman
- Indian Student Association
- International Student Advisory Board
- International Student Organization for Languages and Cultures
- Iranian Student Association
- Italian Studies and Culture Club
- Korean Pop Culture Club
- Korean Student Association
- Latino Student Association
- LGBTQ+ Union
- Linking Internationals in the Community (LINC)
- Men of Excellence
- Middle East Student Association
- Moroccan Students Association
- MSU French Club
- MSU German Club
- MSU Japanese Club

- MSU Russian Club
- MSU Spanish Club
- MSU Nach
- MSU Spectrum
- Muslim Student Association
- Nepalese Student Association
- Pakistani Student Association
- Saudi Students Association
- Sigma Lambda Beta International Fraternity
- Society of Hispanic Professional Engineering
- Sri Lankan Association
- Starkville Russian Club
- Taiwanese Student Association
- Turkish Student Organization
- Vietnamese Student Association

## HOLMES CULTURAL DIVERSITY CENTER (HCDC)

HCDC is a center on campus that provides services and programs for international students. HCDC staff plan and implement events on campus that bring together international students and share international culture. The International Student Advisory Board is housed in HCDC. This student leadership organization is for both international and domestic students to plan and implement events and initiatives that will enhance the international student experience. Please visit [hcdc.msstate.edu](http://hcdc.msstate.edu) for more information, or visit our office in Suite 220 of the Colvard Student Union.

## **LINKING INTERNATIONAL IN THE COMMUNITY (LINC)**

(LINC) is a program which helps international students become active within the larger Mississippi State University and Starkville communities through host families and U.S. student mentors.

## **INTERNATIONAL FIESTA**

The annual International Fiesta is a day of cultural exchange and entertainment. University organizations, clubs, departments, and other communities will have displays and food booths indicative of their countries. Various groups will provide entertainment in the form of dancing, musical instruments, singing, as well as a fashion show. In addition to inflatables, unique cultural games and activities will be available for children.

## **INTERNATIONAL STUDENT INSIGHT DAYS**

Hosted by the Holmes Cultural Diversity Center and the International Institute, the International Student Insight Days consists of various orientation programs designed to help new international students (including freshmen, transfer students, and graduate students) have a smooth transition from their countries or previous locations to student life at Mississippi State University. Students will learn about services of various departments and the policies and procedures of Mississippi State University. In addition, students will be able to build friendships through various interactive activities. Students can also have the immigration hold removed by checking in at the registration booth with the required documents, which is one of the processes that all international students go through in order to register classes.

## **INTERNATIONAL STUDENT LIAISON PROGRAM (ISL)**

ISL is an initiative in which current international and U.S. students support new international students before their arrival and during the orientation, International Student Insight Days. The goal is to help new international students have a smooth transition from their countries and adjust to campus life as well as to make the orientation more interactive and build connections between new and current students.





# 11 PLACES YOU SHOULD VISIT

## ATLANTA, GEORGIA

From touring the CNN studios to eating boiled peanuts at a Braves game, Atlanta has no shortage of exciting activities for every age. Some of the attractions include:

- Georgia Aquarium
- Six Flags Amusement Park
- World of Coca-Cola
- Centennial Olympic Park

Visit [atlantaga.gov/visitors](http://atlantaga.gov/visitors) for more information.

## DESTIN, FLORIDA

Emerald Coasting is sugar-white sand and emerald-green water. It is dolphin cruises, open-air shopping and fresh, local seafood restaurants. It is a fun family vacation and a romantic spot for couples. Get a little sand in your soul in Destin, Ft. Walton Beach and Okaloosa Island, the Heart of Florida's Emerald Coast. Some things to consider include:

- Destin Harbor Boardwalk
- Big Kahuna's Water & Adventure Park
- Destin Snorkel
- Destin Beaches

Visit [cityofdestin.com](http://cityofdestin.com) for more information.

## GATLINBURG, TENNESSEE

The City Commission and the administration of the City of Gatlinburg are committed to excellence in the provision of quality municipal services designed to protect the lives and property of visitors and citizens, to promote the natural beauty and tourism activities of the area, and to provide for responsible and orderly growth.

- Smoky Mountains Horseback Ride
- Titanic- World's Largest Museum Attraction
- Dixie Stampede
- Ripleys Aquarium of the Smokies

Visit [gatlinburgtn.gov](http://gatlinburgtn.gov) for more information.

## GULF COAST, MISSISSIPPI

Visit the Mississippi Gulf Coast, overlooking the sparkling Gulf of Mexico and 62 miles of scenic shoreline including the world's longest man-made beach. Look for the beach vendors where you can jet ski, aqua cycle, and more. Visitors can enjoy our world-class golf courses, artistic and historical museums and after a day of fun, visitors can begin an exciting evening with dinner at a local seafood restaurant before heading off to enjoy 24-hour gaming at one of the coast's casino resorts. Whether you are looking for a relaxing weekend getaway or an adventure-filled vacation, change your pace and visit the Mississippi Gulf Coast!

- The Jefferson Davis Home
- Biloxi Lighthouse
- D'Iberville Town Clock

Visit [gulfcoast.org](http://gulfcoast.org) for more information.

## HUNTSVILLE, ALABAMA

Huntsville, Alabama USA is one of the most recognized cities in the Southeast — consistently named one of the best places to live and work by a variety of national publications. Our city is regularly named as a premier location for both business and quality of life.

- U.S. Space & Rocket Center
- Huntsville/ Madison Botanical Garden
- Army's Redstone Arsenal

Visit [hsvcity.com](http://hsvcity.com) for more information.

## MEMPHIS, TENNESSEE

Memphis is the largest city in the state of Tennessee, the largest city on the Mississippi River, the third-largest in the Southeastern United States, and the 20th-largest in the United States. Things to do in Memphis include:

- Beale Street
- Elvis Presley's Graceland
- Memphis Zoo
- The Pink Palace

Visit [memphistn.gov](http://memphistn.gov) for more information.

## MISSISSIPPI DELTA, MISSISSIPPI

Adventurous travelers will find the one-of-a-kind experiences they live for here in the Mississippi Delta. Relive southern history on a Mississippi plantation or in an antebellum mansion turned bed and breakfast inn, or walk the battlefields where the fate of the nation was determined during the Civil War. Sway to the soulful sounds of famous blues musicians performing in juke joints, clubs, and bars where the blues is as much a lifestyle as a style of music. Get a taste of Mississippi soul food and savor southern cooking from down-home dishes to gourmet cuisine.

- B.B. King Museum
- Blues & More Driving Tour
- Biedenharn Coca-Cola Museum

Visit [visitthedelta.com](http://visitthedelta.com) for more information.

## NASHVILLE, TENNESSEE

Nashville is a city that sizzles with American music, Southern hospitality, unbelievable cuisine and a boundless spectrum of nightlife. Come join us and together we will keep the music playing!

- Country Music Hall of Fame
- The Parthenon
- Ryman Auditorium
- Honky Tonk Highway

Visit [visitmusiccity.com](http://visitmusiccity.com) for more information.

## NEW ORLEANS, LOUISIANA

Steeped in a history of influences from Europe, the Caribbean, Africa and beyond, New Orleans is home to a truly unique melting pot of culture, food and music. You'll find bowls filled to the rim with gumbo, late nights in dark jazz clubs, strolls through historic neighborhoods, and tantalizing festivals throughout the year. Come down and experience New Orleans, one of America's most culturally and historically-rich destinations. NewOrleansOnline.com can introduce you to all of the Big Easy's greatest charms. As the official New Orleans tourism guide, the site is loaded with resources that will help you make the most of your visit. Download our free New Orleans city guide book for more information on things to do, where to eat and great places to stay.

- Bourbon Street
- Cafe du Monde
- French Quarter

Visit [neworleansonline.com](http://neworleansonline.com) for more information.

## SAVANNAH, GEORGIA

Savannah's charm is something out of a fairy tale – it's the most beautiful city in the nation. When you're in Savannah, you know it. The City's character has ripened over time by looking to our heritage – honoring and loving it – then driving change to realize dreams. Our gnarled, twisting trees – some hundreds of years old – have witnessed this change, but remain firmly rooted in our community's history. If they could talk, these trees would spin remarkable tales of Savannah's past. But they would tell even better stories about what lies ahead.

- Historic District
- Olde Pink House
- Sixth Sense Savannah Ghost Tours

Visit [savannahga.gov](http://savannahga.gov) for more information.

## TUPELO, MISSISSIPPI

Tupelo is a manufacturing, retail and distribution center—a model city of 38,000 citizens offering a high quality of life and a broad range of attractions for both residents and visitors.

- Elvis Presley Lake & Campground
- The Birthplace of Elvis Presley
- The Gumtree Museum of Art

Visit [tupeloms.gov](http://tupeloms.gov) for more information.





**Students at Mississippi State are supported through several dedicated resources, including health care, education, counseling, and spiritual connection.**



# OFFICE OF CARE, CONCERN AND WELL-BEING

## DEAN OF STUDENTS' OFFICE

662.325.3611 | STUDENTS.MSSTATE.EDU | DOS@MSSTATE.EDU

YMCA BUILDING - GROUND FLOOR

The Dean of Students' Office serves as a first point of contact when students are experiencing academic, personal, or transition issues. This office provides assistance and case management for students in crisis and referrals to additional resources, if needed. It also provides outreach to parents and families. The staff in this area coordinates a range of services to assist students with issues and concerns that may interfere with their academic success.

## BULLY'S PANTRY

Bully's Pantry is a collaborative effort between the Division of Student Affairs and the Student Association. As part of the Mississippi State Food Security Network, a broader initiative to meet the basic needs of students, Bully's Pantry provides nutritious food, toiletries, school supplies, and other necessary items to current Mississippi State students in need. Bully's Pantry is located at 120 Morgan Avenue (south side of campus) and open weekdays from 1-4 p.m. These times are subject to change. A Bully's Pantry vending machine is located on the first floor of the Colvard Student Union for students needing one or two quick necessities. Please visit [students.msstate.edu](https://students.msstate.edu) for updates on hours for Bully's Pantry.

## MAROON MEALS

Maroon Meals is a program that notifies current Mississippi State students when free food is available on campus, including its location and how long it will be available. To opt in for Maroon Meals, follow these steps:

- Log in to [my.msstate.edu](https://my.msstate.edu) with your Net ID and password.
- Find the Maroon Meals block.
- Click the "Subscribe" button.
- Be on the lookout for your first Maroon Meals email.

## DISABILITY RESOURCE CENTER

662.325.3335 | DRC.MSSTATE.EDU | @MSSTATE.DRC

MONTGOMERY HALL - GROUND FLOOR

The Disability Resource Center (DRC) leads university efforts in facilitating an inclusive and accessible environment for students with disabilities and in celebrating disability as a valued aspect of diversity. We collaborate with students who have disabilities to provide and/or arrange accommodations for academic, residential life, and many co-curricular events.

If a student has or thinks they may have a disability, please contact [drc@saffairs.msstate.edu](mailto:drc@saffairs.msstate.edu) or call **662.325.3335** to arrange a confidential discussion regarding equitable access and accommodations. Disabilities may include, but are not limited to: mental health, attentional, learning, autism spectrum disorders, chronic health, traumatic brain injuries and concussions, intellectual disabilities, vision, hearing, mobility, and speech impairments, as well as some temporary injuries and disability conditions.

For students with and without disabilities who want to further support a positive culture for disability at Mississippi State, we encourage them to contact us.



## UNIVERSITY COMMON MINISTRY

Mississippi State's Common Ministry serves by affirming the spiritual lives of university students, faculty, and staff.

### BAPTIST STUDENT UNION

Campus Ministers: Michael Ball and Daniel Herndon  
[msubsu.com](http://msubsu.com) | 662.323.5761

### CANTERBURY EPISCOPAL CAMPUS MINISTRY

Campus Minister: Rev. Dr. George Rambow  
[msuchaplain@gmail.com](mailto:msuchaplain@gmail.com)  
[resurrectionstarkville@gmail.com](mailto:resurrectionstarkville@gmail.com)  
[canterburymso.org](http://canterburymso.org) | 662.323.3483

### CATHOLIC CAMPUS MINISTRY

Campus Minister: Joseph Terbrack  
[ccm@stjosephstarkville.org](mailto:ccm@stjosephstarkville.org)  
[msstateccm.org](http://msstateccm.org) | 662.323.2257

### CHOSEN CAMPUS MINISTRY

Campus Minister: Ra'mon Forbes  
[c3chosen@gmail.com](mailto:c3chosen@gmail.com)  
[facebook.com/ChosenC3](https://facebook.com/ChosenC3) | 601.260.6739

### CRU

Campus Ministers: Duane and Alice Walters  
[alice.walters@cru.org](mailto:alice.walters@cru.org) | 407.495.9178  
[duane.walters@cru.org](mailto:duane.walters@cru.org) | 662.242.3194  
[facebook.com/cruatmsu](https://facebook.com/cruatmsu)

### LUTHERAN STUDENT FELLOWSHIP

Campus Minister: Rev. David Hartung  
[office@saintlukestarkville.org](mailto:office@saintlukestarkville.org) | 662.694.9201

### MSU HILLEL: JEWISH LIFE ON CAMPUS

Contact: Tyler Daniel  
[msujewishlife@gmail.com](mailto:msujewishlife@gmail.com) | 601.918.5867

### REFORMED UNIVERSITY FELLOWSHIP

Campus Minister: Joe Johnson  
[joe.johnson@ruf.org](mailto:joe.johnson@ruf.org)  
[ruf.org/msu](http://ruf.org/msu) | 601.573.5602

### UKIRK

Director: Cate Van Halsema  
[ukirkmsstate@gmail.com](mailto:ukirkmsstate@gmail.com) | 616.206.5800  
Facebook, Twitter, & Instagram: @2msukirk

### WESLEY FOUNDATION

Campus Ministers: Hugh Griffith and Ryan Stallcup  
[statewesleyfoundation@gmail.com](mailto:statewesleyfoundation@gmail.com)  
[statewesley.org](http://statewesley.org) | 662.323.1778  
[facebook.com/msstatewesley](https://facebook.com/msstatewesley)  
Instagram: @msstatewesley

### YOUNG LIFE

Campus Minister: Taylor Rorex  
[younglifemso@gmail.com](mailto:younglifemso@gmail.com)  
[taylor.rorex.yl@gmail.com](mailto:taylor.rorex.yl@gmail.com)  
[starkville.younglife.org](http://starkville.younglife.org) | 865.216.3466

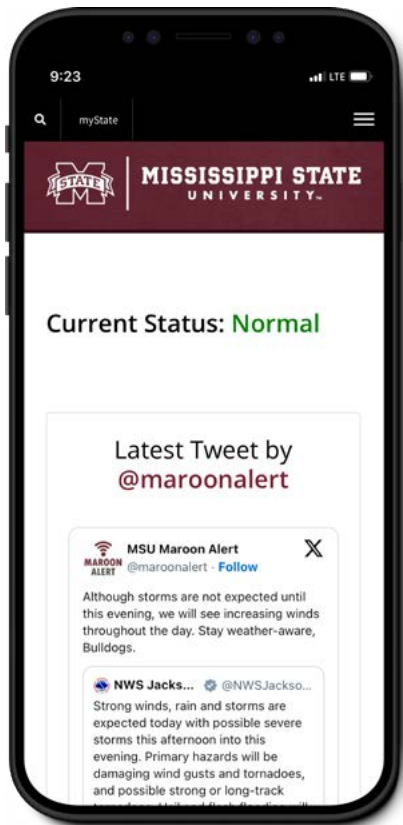
### UNIVERSITY CHRISTIAN STUDENT CENTER

Campus Minister: Shane Meredith  
[ministershane@gmail.com](mailto:ministershane@gmail.com)  
[starkvillechurch.org](http://starkvillechurch.org) | 662.323.1499

Any student feeling that his or her spiritual needs cannot be met by any of the above organizations should contact the Dean of Students for further guidance at **662.325.3611**.



# MAROON ALERT



# CLEAR THE AIR SMOKE FREE CAMPUS

## MAROON ALERT

EMERGENCY.MSSTATE.EDU | @MAROONALERT

Maroon Alert is the official source for campus emergency information. It includes several methods of notifying the university community that an emergency exists or is developing. Learn more about Maroon Alert and emergency response steps by visiting [emergency.msstate.edu](https://emergency.msstate.edu). Students will be enrolled to receive Maroon Alerts. Family and guests of the university can receive notifications by texting "MAROONALERT" to **888777**. Follow updates and advisories [@MaroonAlert](https://twitter.com/MaroonAlert) on X.

### BE PREPARED

Mississippi State wants to help your student be prepared in the event of an emergency.

- Verify you have signed up to receive Maroon Alerts
- Make an emergency kit
- Keep your vehicle travel-ready
- Develop an emergency communication plan

Find emergency preparedness tips and emergency guidelines at [emergency.msstate.edu](https://emergency.msstate.edu).

## SMOKE-FREE CAMPUS

SMOKEFREE.MSSTATE.EDU

Smoke-free means that smoking in any form is prohibited on campus including:

- Cigarettes
- Cigars
- Pipes
- E-Cigarettes
- Hookah
- Juuls
- Similar Devices

Cessation programs are offered through the Office for Student Well-Being to students and employees who wish to stop using tobacco products. These programs are free of charge with the exception of prescribed medications that may be required. While the university does not require faculty, staff, or students to quit smoking or using tobacco products, we do expect the policy to be followed while on university property. For more information about our policy, visit [smokefree.msstate.edu](https://smokefree.msstate.edu).





**DOWNLOAD THE  
HEALTHYSTATE APP**



## UNIVERSITY RECREATION

662.325.7529 | UREC.MSSTATE.EDU | @MSSTATEUREC | SANDERSON CENTER

**FREE MEMBERSHIP FOR FULL-TIME STUDENTS**

University Recreation provides unique programs, services, and facilities that support the total educational development of students. Mississippi State has several recreation facilities on campus, including the Sanderson Recreation Center, the Sawyer tennis courts, the RecPlex outdoor field complex, and the Chadwick Lake disc golf course.

The Sanderson Center is an award-winning 150,000-square-foot recreation facility that is one of the most popular student areas at Mississippi State. Fitness amenities include multiple strength and cardio training spaces, free group exercise classes including yoga, Zumba, group cycling, and an indoor track. Other popular features include racquetball courts, boxing equipment, an indoor climbing wall, a swimming pool, and two gymnasiums for basketball, volleyball, badminton and indoor soccer. University Recreation also offers outdoor adventure trips, adventure gear rental, adult swim lessons, team-building courses, and personal training and fitness assessments.

### INTRAMURAL SPORTS

- Badminton
- Basketball
- Canoe Battleship
- Dodgeball
- Flag Football
- Futsal
- Golf Scramble\*
- Intertube Water Polo
- Kickball
- Pickleball
- Soccer
- Softball
- Ultimate Frisbee
- Canoe Battleship
- Various eSports
- Volleyball

\*Special Event

### SPORT CLUBS

- Academic Quiz Bowl
- Archery
- Baseball
- Basketball (Men & Women)
- Bass Fishing
- Disc Golf
- Fencing
- Lacrosse (Men & Women)
- Pickleball
- Powerlifting
- Rugby (Men & Women)
- Soccer (Men & Women)
- Swimming
- Table Tennis
- Unified
- Ultimate Frisbee (Men & Women)
- Volleyball (Men & Women)
- Wrestling

*Not all clubs are competitive in nature*



## MSU POLICE DEPARTMENT

662.325.2121 | POLICE.MSSTATE.EDU | @MSSTATEPD | BUTLER WILLIAMS BUILDING

The MSU Police Department is a round-the-clock, year-round, full-service agency dedicated to delivering high-quality law enforcement to the Mississippi State community and its visitors. It focuses on educational initiatives, fostering a safe environment and strict enforcement to encourage student growth, healthy living and safety. The department builds partnerships with the university community through programs and services such as:

- **Campus Security Officers** patrol campus on foot and in utility vehicles, providing an extra set of eyes and ears for the Police Department, assisting in responding to door prop alarms, and checking the security of campus buildings.
- **Emergency Blue Light Phones** are non-dial, outdoor emergency telephones located at strategic points throughout campus. The phones are easily identified by their distinctive blue lights that can be seen day or night. When the button is activated/pushed or the receiver is lifted, the caller is immediately dispatched to the MSU Police Department.
- **The Self-Defense Course (PE 1281)** is taught in different sessions to men and women at Mississippi State. It introduces basic self-defense skills, escape and avoidance strategies, offensive and defensive postures, defensive techniques, and simulated attacks. Taught using Rape Aggression Defense (RAD) systems by nationally accredited instructors, the course explores violence prevention and victim abuse community services. It also addresses basic fitness principles, including strength, flexibility and cardiovascular fitness.
- **Operation I.D.** assists interested individuals in collecting vital information on their valuables. This information is on file in the event that items are lost or stolen while on campus. Individuals can complete a Property Identification Form and keep it in a safe place or turn it into the MSU Police Department so they have the necessary information to give to police officers in the event valuables are lost or stolen.
- **Safe Walk** is a 24/7 service operated by the MSUPD to safely escort individuals to their vehicles, buildings or other campus destinations. Call or text **662.325.2121** and an escort will be sent to walk students to their destination. Safe Walk members are equipped with two-way radios and wear reflective vests. At night, patrol members travel throughout campus in golf carts to provide extra sets of eyes and ears for officers on duty and report any activity that may require law enforcement response. Hours of operation vary, but they generally begin at dark and continue until the early morning hours.



## LONGEST STUDENT HEALTH CENTER

662.325.2431 | HEALTHCENTER.MSSTATE.EDU

@MSSTATE\_HEALTHCENTER | 360 HARDY ROAD

Conveniently located on campus, the Health Center has dedicated staff to take care of your health care needs. For students of the Starkville campus or the Vet School, there is no charge for primary care physician services, which are covered through student tuition. Fees that transfer to a student's account include laboratory work, X-rays and pharmacy services. Insurance will be filed, and the student account will be credited with any payments and/or adjustments received from the insurance company. The clinical staff consists of five physicians and four nurse practitioners. Prescriptions may be transferred from other pharmacies and outside providers to the Student Health Center Pharmacy. Health Center services include:

- Comprehensive Medical Care
- Full-service Pharmacy
- Mental Health
- Allergy Shots
- Travel Immunization
- Nutritional Counseling
- X-Ray
- Lab Work

## STUDENT COUNSELING SERVICES

662.325.2091 | COUNSELING.MSSTATE.EDU

HATHORN HALL

Student Counseling Services (SCS) supports and facilitates personal change in a supportive and inclusive environment through advocacy, university collaboration and a system that is motivated by improving the mental wellness of our student body. SCS strongly endorses acceptance and commitment to diverse populations, and we value and promote mental health of the Mississippi State community. SCS engages with students through therapeutic and wellness-centered services. A variety of free and confidential services available to Mississippi State students are:

- Brief Psychotherapy
- Consultation
- Individual Counseling
- Couples Counseling
- Group Counseling
- Preventative Psycho-Educational Programming
- Sexual Assault Response
- 24-Hour Crisis Response
- Referrals







## OFFICE FOR STUDENT WELL-BEING

662.325.2090 | STUDENTWELLBEING.MSSTATE.EDU | @MSSTATE\_WELLBEING  
205 FAMOUS MAROON BAND STREET

The Office for Student Well-Being equips Bulldogs to develop healthy habits and choices outside the classroom that will create a balanced lifestyle beyond their college career.

### FREE HEALTH & WELL-BEING RESOURCES

- Nutritional Counseling
- Mental Health
- Sexual Health Testing & Packets
- Substance Use Screenings
- Food Freedom Support Group

### BULLDOGS IN RECOVERY

- Sober Tailgates
- Family Weekend Celebration
- Weekly Fun & Educational Seminar
- All Recovery & 12-Step Meetings

### STUDENT & LEADERSHIP INVOLVEMENT

- **Active Minds** helps bring awareness to mental illness and eliminate the stigmas surrounding it.
- **Aspiring Minorities in Health Professions** provides aspiring health professionals with educational information and resources to help them prepare for their preferred health profession.
- **Healthy Dawgs Peer Educators** promote healthy behaviors among Mississippi State students by raising awareness, increasing knowledge of health issues, and providing campus and community resources.

## TELUS HEALTH STUDENT SUPPORT APP

Attending Mississippi State is an exciting life experience. It can also be a time of change, adjustment and stress. The **Telus Health Student Support app** is here to help students succeed. Telus Health Student Support provides free, confidential mental health and well-being support to Mississippi State students, at no charge. All students should download the app and get connected!









## ACADEMIC SUCCESS

Mississippi State is recognized as a place where learning is a top priority. For more than a century, our graduates have established a proud record of admission to medical and law schools, as well as to other graduate and professional programs. Not to mention, our students are in high demand by employers. Academic success matters here, and we are committed to helping our students reach their full potential.

## OFFICE OF THE REGISTRAR

662.325.2022 | [REGISTRAR.MSSTATE.EDU](http://REGISTRAR.MSSTATE.EDU)  
GARNER HALL

The Office of the Registrar is responsible for academic records, academic calendar, examination schedules, master class schedule, course articulation, undergraduate readmission, transcripts, and degree and enrollment verification.

## CLASS ATTENDANCE

University class attendance is strongly correlated to student success, with numerous studies indicating that students with two or fewer absences tend to make higher grades and are more successful than those with more absences. Mississippi State freshmen repeatedly are encouraged to attend every class and make every effort to not be absent. The Academic Operating Policy on Class Attendance is (AOP 12.09).





## REGISTERING FOR CLASSES AND SCHEDULE CHANGES

After Orientation, prior to the start of each semester, all students must meet with their assigned academic advisor who will, in turn, release the student to register for the next semester and answer course selection questions. A student can find their advisor information on their myState account under "Your Advisor." Once released for registration for the upcoming semester, the student will be able to register online through their Banner account via [my.msstate.edu](http://my.msstate.edu).

Students may add/drop a class by accessing their university Banner account via [my.msstate.edu](http://my.msstate.edu). See the Academic Calendar for the add/drop dates.

## ACADEMIC FORGIVENESS

Undergraduate students may request forgiveness for up to 9 credits of undergraduate semester hours at Mississippi State in which they made a D or an F. The original grade remains on the transcript but is not counted toward the student's GPA.

This policy will be applied only to courses taken at Mississippi State. For specific regulations and instructions on this policy, students should contact the Office of the Registrar or refer to the Academic Operating Policy (AOP 12.20).

## DROPPING A COURSE VS. WITHDRAWING FROM THE SEMESTER

Students choosing to drop an individual course after the fifth class day must seek permission from their advisor and will receive a grade of W, if approved. If dropping ALL classes for the semester, students will need to visit [my.msstate.edu](http://my.msstate.edu) to submit a withdrawal request.

## HOW ARE STUDENTS CLASSIFIED?

### FRESHMAN

29 or fewer semester hours

### SOPHOMORE

30-59 semester hours

### JUNIOR

60-89 semester hours

### SENIOR

90 or more semester hours

---

## WHAT DOES IT TAKE TO BE LISTED AS A SCHOLAR?

### PRESIDENT'S LIST

3.8-4.0 GPA

### DEAN'S LIST

3.5-3.79 GPA

---

## WHAT DOES IT TAKE TO GRADUATE WITH HIGH HONORS?

### CUM LAUDE

overall 3.40-3.59 GPA

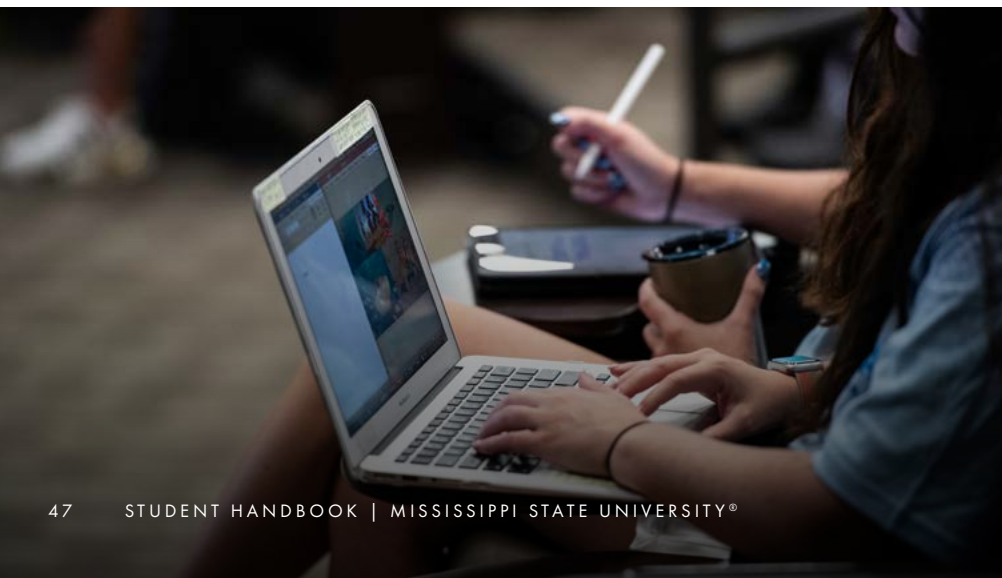
### MAGNA CUM LAUDE

overall 3.60-3.79 GPA

### SUMMA CUM LAUDE

overall 3.80-4.0 GPA

\* Being listed with High Honors under any level of recognition is based on **both** Mississippi State and overall GPA.



## F.E.R.P.A.

Mississippi State students are treated as adults and the university complies fully with the Family Educational Rights and Privacy Act of 1974, typically referred to as F.E.R.P.A., which protects student records. Students may view their grades by logging into their university account. While parents should encourage their student to share the grades, federal law makes records distribution illegal to any person other than the student.

Although a student may access his or her own university records, with limited exception, the university will not disclose, without prior consent, record information to anyone, including parents.

However, students may authorize Mississippi State to grant a parent or family member access to certain educational records through the University's Parent Portal online system. Contact the Office of Parent & Family Services at **662.325.3611** or **family@msstate.edu** to obtain help in navigating this process.

A student may restrict the release of his or her basic contact information published annually in the campus and online directories. Those desiring to restrict directory information may do so online at **my.msstate.edu**.

## ACADEMIC CALENDAR

The full version can be found at [registrar.msstate.edu/calendars/academic-calendar](http://registrar.msstate.edu/calendars/academic-calendar).

AUG 21	Classes Begin
AUG 27	Last day to drop a course without a grade (5th class day) 11:59 p.m.
AUG 27	Fall Convocation
AUG 28	Last day to register or add a course (6th class day) 5:00 p.m.
SEPT 2	Labor Day Holiday – no classes scheduled
OCT 10 - 11	Fall Break – no classes scheduled
NOV 27 - 29	Thanksgiving Holiday – no classes scheduled
DEC 23 - JAN 1	Winter Holidays



# GPA CALCULATOR

	<u>GRADE</u>	<u>QUALITY POINTS</u>
Excellent	A	4
Good	B	3
Satisfactory	C	2
Poor	D	1
Failure	F	0

EXAMPLE:	<u>GRADE</u>	=	<u>QUALITY POINTS</u>	x	<u>COURSE HOURS</u>	=	<u>TOTAL</u>
English Comp 1 (EN 1103)	B	=	3	x	3	=	9
Gen. Psychology (PSY 1013)	A	=	4	x	3	=	12
Biology I (BIO 1134)	B	=	3	x	4	=	12
Early U.S. History (HI 1063)	C	=	2	x	3	=	6
							<u>39</u>

Calculate Your GPA:	<u>TOTAL QUALITY POINTS</u>	÷	<u>TOTAL COURSE HOURS</u>	=	<u>GRADE POINT AVERAGE</u>
	39	÷	13	=	3.0

Calculate your GPA online at [registrar.msstate.edu/students/gpa-calculator](http://registrar.msstate.edu/students/gpa-calculator).

## MAROON U

Maroon U is a free, required course for all first-time freshmen and transfer students enrolled at Mississippi State. It is offered exclusively online through Canvas. Maroon U is a “fast start” intended to help each student get ready to hit the ground running and put their best foot forward for a successful career at Mississippi State. Topics covered in Maroon U include:



- Academic Success
- Belonging and Success
- Campus Safety and Emergency Guidance
- Career/Major Exploration
- Financial Wellness
- Sexual Assault and Violence Education
- Student Conduct and Honor Code
- Well-being





## HONOR CODE

HONORCODE.MSSTATE.EDU

The Honor Code promotes the highest standards of integrity and honor for Mississippi State students both inside and outside the classroom. Each student enrolling in the institution agrees to abide by the Honor Code. The Student Honor Code Office leads the university's efforts to promote academic integrity as well as reduce academic misconduct. In the process, the office works to foster an environment that encourages fairness, personal responsibility, and integrity.

*"As a Mississippi State University student I will conduct myself with honor and integrity at all times. I will not lie, cheat, or steal, nor will I accept the actions of those who do."*





## CENTER FOR ACADEMIC EXCELLENCE

662.325.2957 | [STUDENTSUCCESS.MSSTATE.EDU](http://STUDENTSUCCESS.MSSTATE.EDU)

[STUDENTSUCCESS@MSSTATE.EDU](mailto:STUDENTSUCCESS@MSSTATE.EDU)

YMCA BUILDING - GROUND FLOOR

### TUTORING

Students can contact the Center for Academic Excellence for tutoring in any subjects and a tutor will be located to help in the desired subject.



### SUPPLEMENTAL INSTRUCTION

[SI.MSSTATE.EDU](http://SI.MSSTATE.EDU)

Supplemental Instruction (SI) is a free academic resource designed to help students succeed in historically difficult courses. SI offers regularly scheduled study sessions where students work collaboratively to break down complex topics. Study sessions are led by SI Leaders, students who have already taken the class and succeeded. SI Leaders attend all class lectures, take notes, meet with their assigned faculty member, plan for study sessions, and lead study sessions.



### FRESHMAN YEAR NAVIGATORS

662.325.7221 | [STUDENTSUCCESS.MSSTATE.EDU](http://STUDENTSUCCESS.MSSTATE.EDU)

Freshman Year Navigators are Mississippi State students who help incoming freshmen navigate their first year. Navigators call, text, email, and meet with their assigned students throughout the year to help their freshmen succeed in school by answering questions and finding resources.





## THE WRITING CENTER

662.325.1045 | [WRITINGCENTER.MSSTATE.EDU](http://writingcenter.msstate.edu) | 94 PRESIDENT'S CIRCLE

**ONLINE SCHEDULER:** [MSSTATE.MYWCONLINE.COM](http://msstate.mywconline.com)

The Writing Center is dedicated to helping all Mississippi State students develop as writers and critical thinkers. Available online and in person, its staff of writing consultants includes undergraduate and graduate students trained in writing-center theory, practice and research, and faculty members from our writing program. Scheduled 30-minute and 60-minute consultations are available to all Mississippi State students free of charge; walk-in appointments are also welcome, though availability cannot be guaranteed. Assistance is provided to writers in a variety of genres, including class assignments and professional documents and material. During any stage of the composition processes, staff are available to help with brainstorming, development, and revisions.

## MSU LIBRARIES

662.325.7668 | [LIBRARY.MSSTATE.EDU](http://library.msstate.edu)

**MITCHELL MEMORIAL LIBRARY - 395 HARDY ROAD**

MSU Libraries are at the forefront of research and technology. Whether using Mitchell Memorial Library or one of the branch libraries, students, faculty, and researchers will find books, online resources, primary source documents, and other research tools. Through our extensive collections of online journal and e-books databases as well as our digital collections, students can do research from anywhere. Students needing research help can visit the Access & Information Desk, send an email, use the chat feature, schedule a consultation, or attend a workshop.

The Libraries provide students with a variety of non-traditional services including access to computers, equipment checkout, 3D printers, 3D scanners, color printing, and VR. Additionally, students can explore our unique collections and spaces including the Mississippi Political Collections, Grant Museum, Templeton Museum, Frank and Virginia Williams Collection of Lincolniana, and the John Grisham Room.

The MSU branch libraries provide focused services and collections. They include the College of Veterinary Medicine Library, the CAAD Library, the Jackson Design Center Library, and the Phil Hardin Foundation Libraries on the MSU-Meridian campus. The MSU Libraries are home to friendly and knowledgeable staff and faculty members ready to help.





## NATIONAL STUDENT EXCHANGE

662.325.7048 | NSE.ORG | LEE HALL - SUITE 3501

The National Student Exchange (NSE) provides opportunities for you to study for a semester or a year at another NSE university in the United States, Canada, Guam, Puerto Rico, or the U.S. Virgin Islands. With nearly 170 universities from which to choose, you should be able to find a campus with just the right combination of courses, facilities, and environment to meet your personal and academic needs and interests. Students participate in NSE to:

- Broaden their perspectives
- Explore new areas of study
- Learn from different professors
- Access new courses
- Experience personal growth
- Make new friends
- Live in a different area
- Investigate graduate schools
- Seek future employment
- Become more independent
- Experience life from a different point of view



NSE participation expands academic, cultural, and personal experiences. The changes in attitudes, understanding of other people in other settings, flexibility, maturity, self-confidence, and decision-making are similar to the experiences of students who study internationally. NSE is an enhancement of your undergraduate program that demonstrates to graduate schools and future employers that you possess the flexibility to plan, follow-through and go beyond the expected. For more information, visit [nse.org](http://nse.org) or contact the Mississippi State NSE Coordinator, Lisa Stricklin, by calling **662.325.7048** or emailing [lstricklin@provost.msstate.edu](mailto:lstricklin@provost.msstate.edu).

## THE GRADUATE SCHOOL

662.325.7400 | GRAD.MSSTATE.EDU | ALLEN HALL - SUITE 617



# THRIVE IN FIVE

YOUR DREAM CAREER JUST GOT CLOSER

*Accelerate your future with Mississippi State's dual degree program.*

Ambitious students now can aspire even higher at Mississippi State. Undergraduate students who have completed at least 60 hours of coursework and have a minimum 3.50 GPA may begin the process of earning their master's degree while completing their bachelor's degree. Learn more at [msstate.edu/thriveinfive](https://msstate.edu/thriveinfive).



Thrive in Five is perfect for several types of students, including:

- Self-motivated high school graduates with advanced placement courses who want to continue a fast pace to the finish line
- Highly skilled community college graduates looking for a flexible, fast way to climb the ladder and achieve career goals
- Eager college students looking to save time and money by graduating sooner

# ACADEMIC COLLEGES, MAJORS & CONCENTRATIONS

Explore all of what the university has to offer in its colleges and their respective programs, departments, and units.  
Visit [majors.msstate.edu](http://majors.msstate.edu) to learn more.

## ACADEMIC AFFAIRS

[DSCI.MSSTATE.EDU](http://DSCI.MSSTATE.EDU)

### DATA SCIENCE

- Business Information Systems
- Computational Agriculture and Natural Resources
- Computational Intelligence
- Geoinformatics
- Marketing and Supply Chain Analytics
- Psychoinformatics
- Sports Science
- Social Data Analysis
- Statistical Modeling
- Visualization and Visual Analytics for Built Environment

## AGRICULTURE AND LIFE SCIENCES

[CALS.MSSTATE.EDU](http://CALS.MSSTATE.EDU)

### AGRIBUSINESS

- Management
- Policy and Law
- Production

### AGRICULTURAL EDUCATION, LEADERSHIP, & COMMUNICATIONS

- Agricultural Communications
- Agricultural Education
- Agricultural Leadership

### AGRICULTURAL ENGINEERING TECHNOLOGY & BUSINESS

- Enterprise Management
- Natural Resources and Environmental Management
- Precision Agriculture
- Surveying and Geomatics

### AGRICULTURAL SCIENCE

### AGRONOMY

- Agricultural and Environmental Soil Sciences
- Golf and Sports Turf Management
- Integrated Crop Management
- Integrated Pest Management

### ANIMAL & DAIRY SCIENCES

- Business and Industry
- Pre-Veterinary Medical Technology
- Pre-Veterinary/Science
- Production Management

### BIOCHEMISTRY

- Bioinformatics
- Entomology
- Forensic Sciences
- Plant Pathology
- Pre-Dental
- Pre-MBA
- Pre-Medicine
- Pre-Optometry
- Pre-Pharmacy
- Pre-Veterinary
- Science

### CULINOLOGY

### ENVIRONMENTAL ECONOMICS & SUSTAINABILITY

### ENVIRONMENTAL SCIENCE IN AGRICULTURAL SYSTEMS

### FASHION DESIGN & MERCHANDISING

- Design and Product Development
- Merchandising

### FOOD SCIENCE, NUTRITION & HEALTH PROMOTION

- Food and Nutrition
- Food Safety
- Food Science
- Food Science Technology
- Pre-Health Professions

### HORTICULTURE

- Floral Management
- Floricultural and Ornamental
- Fruit and Vegetable Production

### HUMAN DEVELOPMENT & FAMILY SCIENCE

- Child Development\*\*
- Child Life
- Family and Consumer Sciences Teacher Education
- Family Science
- Youth Development\*\*

### LANDSCAPE ARCHITECTURE

### LANDSCAPE CONTRACTING

### POULTRY SCIENCE

- Applied Poultry Management
- Science and Pre-Veterinary Science

## ARCHITECTURE, ART AND DESIGN

[CAAD.MSSTATE.EDU](http://CAAD.MSSTATE.EDU)

### ARCHITECTURE

### ART, UNDECLARED\*

- Fine Arts
- Graphic Design
- Photography

### BUILDING CONSTRUCTION SCIENCE

### INTERIOR DESIGN

## ARTS AND SCIENCES

[CAS.MSSTATE.EDU](http://CAS.MSSTATE.EDU)

### ANTHROPOLOGY

### APPLIED SOCIOLOGY

### BIOLOGICAL SCIENCES

- Botany
- Pre-Dental
- Pre-Health Records Administration
- Pre-Medical
- Pre-Nursing
- Pre-Occupational Therapy
- Pre-Optometry
- Pre-Physical Therapy
- Pre-Veterinary
- Zoology

### CHEMISTRY

- American Chemical Society
- Pre-Health
- Pre-Medicine
- Pre-Pharmacy

### COMMUNICATION

- Broadcasting and Digital Journalism
- Communication and Media Studies\*\*
- Print and Digital Journalism
- Public Relations\*\*
- Theatre

### CRIMINOLOGY

### ECONOMICS

### ENGLISH

### FOREIGN LANGUAGE

- Asian Studies
- Classics
- French
- German
- Spanish

### GENERAL SCIENCE

### GEOSCIENCES

- Broadcast Meteorology
- Environmental Geosciences
- Geographic Information Systems
- Geography
- Professional Geology
- Professional Meteorology



**HISTORY\*\***

**INTERDISCIPLINARY STUDIES\*\***

- Entertainment Technology

**LIBERAL ARTS**

- Political Communication

**MATHEMATICS**

**MEDICAL TECHNOLOGY**

**MICROBIOLOGY**

- Pre-Veterinary Medicine

**MUSIC**

**PHILOSOPHY**

- Pre-Ministry
- Religion

**PHYSICS**

**POLITICAL SCIENCE**

- Pre-Law (Offered as a minor with any major)

**PSYCHOLOGY\*\***

**SOCIAL WORK**

**SOCIOLOGY**

**BUSINESS ECONOMICS**  
[BUSINESS.MSSTATE.EDU](http://BUSINESS.MSSTATE.EDU)

ALL BUSINESS MAJORS OFFER A CONCENTRATION IN INTERNATIONAL BUSINESS

**ACCOUNTING**

**BUSINESS ADMINISTRATION\*\***

**BUSINESS ECONOMICS**

**BUSINESS INFORMATION SYSTEMS**

**FINANCE**

- Risk Management and Insurance

**MANAGEMENT**

**MARKETING**

- Integrated Digital Marketing
- PGA Golf Management

**SUPPLY CHAIN LOGISTICS**

**EDUCATION**  
[EDUC.MSSTATE.EDU](http://EDUC.MSSTATE.EDU)

**EDUCATIONAL PSYCHOLOGY\*\***

**ELEMENTARY EDUCATION\*\***

- Early Childhood
- Middle School

**INDUSTRIAL TECHNOLOGY**

- Industrial Automation\*\*
- Industrial Coatings\*\*
- Industrial Packaging\*\*
- Manufacturing and Maintenance\*\*
- Process Technology\*\*

**INFORMATION TECHNOLOGY SERVICES**

**KINESIOLOGY**

- Clinical Exercise Physiology
- Neuromechanics
- Physical Activity and Coaching
- Physical Education and Coaching
- Sport Administration
- Strength & Conditioning

**MUSIC EDUCATION**

- Guitar
- Instrumental
- Piano
- Vocal

**PERFORMANCE**

- Guitar
- Keyboard
- Instrumental
- Vocal

**SECONDARY EDUCATION**

- Biology Education
- Chemistry Education
- English Education
- Mathematics Education
- Physics Education
- Social Studies Education

**SPECIAL EDUCATION**

**ENGINEERING**  
[BAGLEY.MSSTATE.EDU](http://BAGLEY.MSSTATE.EDU)

**AEROSPACE ENGINEERING**

- Aeronautics
- Astronautics

**BIOMEDICAL ENGINEERING**

**BIOSYSTEMS ENGINEERING**

**CHEMICAL ENGINEERING**

- Biomolecular Engineering
- Chemical Engineering Practice
- Chemical Engineering Research/Development

**CIVIL ENGINEERING**

- Environmental Engineering

**COMPUTER ENGINEERING**

**COMPUTER SCIENCE**

- Artificial Intelligence
- Computational Science
- Human and Visual Computing
- Systems

**CYBERSECURITY**

**ELECTRICAL ENGINEERING**

- Power and Energy Systems\*

**INDUSTRIAL ENGINEERING**

**MECHANICAL ENGINEERING**

**PETROLEUM ENGINEERING**

**SOFTWARE ENGINEERING**

**FOREST RESOURCES**  
[CFR.MSSTATE.EDU](http://CFR.MSSTATE.EDU)

**FORESTRY**

- Environmental Conservation
- Forest Business
- Forest Management
- Urban Forestry
- Wildlife Management

**NATURAL RESOURCE & ENVIRONMENTAL CONSERVATION**

- Natural Resource Law and Administration
- Natural Resource Technology
- Resource Conservation Science

**SUSTAINABLE BIOPRODUCTS**

**WILDLIFE, FISHERIES & AQUACULTURE**

- Conservation Biology
- Conservation Law Enforcement
- Human-Wildlife Interactions
- Wildlife Agriculture Conservation
- Wildlife Veterinary Medicine
- Wildlife, Fisheries and Aquaculture Science

**PROFESSIONAL AND CONTINUING STUDIES**  
[CPCS.MSSTATE.EDU](http://CPCS.MSSTATE.EDU)

**BACHELOR OF APPLIED SCIENCE**

- Applied Science
- Business Office Technology
- Public Management

**VETERINARY MEDICINE**  
[CVM.MSSTATE.EDU](http://CVM.MSSTATE.EDU)

**VETERINARY MEDICAL TECHNOLOGY**

\*CONCENTRATIONS DECLARED IN SOPHOMORE YEAR PENDING PORTFOLIO REVIEW

\*\*INDICATES PROGRAM IS ALSO OFFERED FULLY ONLINE THROUGH MSU ONLINE



# ACADEMIC ADVISORS

## Undeclared

Lynda Moore  
252 Famous Maroon Band Street  
662.325.4052  
lkm45@msstate.edu

## AGRICULTURE & LIFE SCIENCES

CALS.MSSTATE.EDU

### CALS Dean's Office

Jada Chubb  
201F Bost  
662.325.7752  
jchubb@cals.msstate.edu

### Agribusiness

Dr. Josh Maples  
320-A Lloyd-Ricks-Watson  
662.325.1774  
josh.maples@msstate.edu

### Agricultural Engineering Technology & Business

Dr. Joel Paz  
253 Agricultural Engineering Building  
662.325.4798  
jpaz@abe.msstate.edu

### Agricultural Science & Ag Education, Leadership, & Communications

Bailey Poindexter  
205 Lloyd-Ricks-Watson  
662.325.7703  
baileyp@humansci.msstate.edu

### Agronomy

Dr. Richard Harkess  
142A Dorman Hall  
662.325.4556  
richard.harkess@msstate.edu

### Animal & Dairy Sciences

Erica Carroll  
2111 ADS Building  
662.325.4344  
edc226@msstate.edu

### Biochemistry/Entomology & Plant Pathology

Dr. Aswathy Rai  
402 Dorman Hall  
662.325.2640  
anr424@msstate.edu

### Environmental Economics & Sustainability

Dr. Josh Maples  
320-A Lloyd-Ricks-Watson  
662.325.1774  
josh.maples@msstate.edu

### Environmental Science in Agricultural Systems

Dr. Michael Cox  
440 Dorman Hall  
662.325.2311  
mcox@pss.msstate.edu

### Fashion Design & Merchandising

Bailey Poindexter  
205 Lloyd-Ricks-Watson  
662.325.7703  
baileyp@humansci.msstate.edu

### Food Science & Culinary

Dr. Wes Schilling  
106 Herzer Building  
662.325.9456  
schilling@foodscience.msstate.edu

### Horticulture

Dr. Richard Harkess  
142A Dorman Hall  
662.325.4556  
richard.harkess@msstate.edu

### Human Development & Family Science

Bailey Poindexter  
205 Lloyd-Ricks-Watson  
662.325.7703  
baileyp@humansci.msstate.edu

### Landscape Architecture

Jason Walker  
LA Facility, Suite C119  
662.325.4561  
jwalker@lalc.msstate.edu

### Landscape Contracting & Management

Dr. Tim Schauwecker  
LA Facility, Suite C108  
662.325.3012  
tjs2@msstate.edu

### Nutrition

Dr. Mandy Conrad  
203 Herzer Building  
662.325.0144  
agc8@msstate.edu

### Poultry Science

Dr. Jessica Wells  
103 Hill Poultry Science Building  
662.769.2853  
j.wells@msstate.edu

## ARCHITECTURE, ART & DESIGN

CAAD.MSSTATE.EDU

### School of Architecture

Pandora Prater  
240 Giles Hall  
662.325.2202  
pprater@caad.msstate.edu

### Department of Art

Cammie Hoyt  
102 Freeman Hall  
662.325.8590  
choyt@caad.msstate.edu

### Interior Design Program

Beth Miller  
125 Etheredge Hall  
662.325.0530  
bmiller@caad.msstate.edu

### Building Construction Science Program

Mari Shurden  
132 Howell Building  
662.325.8310  
mshurden@caad.msstate.edu

**Anthropology & Middle Eastern Cultures**

Dr. Anna Osterholtz  
204 Cobb Building  
662.325.2013  
ajo163@msstate.edu

**Biological Sciences**

Dr. Brandy Roberts  
115 Harned Hall  
662.325.3120  
roberts@biology.msstate.edu

**Chemistry**

Dr. Ericka Akins  
1115 Hand Chemical Lab  
662.325.3584  
eakins@chemistry.msstate.edu

**Classical & Modern Languages & Literatures**

Amie Russell  
1508 Lee Hall  
662.325.3683  
amie@cml.msstate.edu

**Communication**

Casey King  
130 McComas Hall  
662.325.3779  
cking@comm.msstate.edu

**Criminology**

Mary Ann Dean  
207 Bowen Hall  
662.325.7868  
mdean@soc.msstate.edu

**English**

Dr. Ginger Pizer  
2305 Lee Hall  
662.325.2240  
gpizer@english.msstate.edu

**Liberal Arts**

Kate Sawaya  
513 Allen Hall  
662.325.2646  
kate@deanas.msstate.edu

**General Science**

Emily Cain  
513 Allen Hall  
662.325.2646  
ecain@deanas.msstate.edu

**Geosciences**

Tina Davis  
109 Hilbun Hall  
662.325.9112  
tina@geosci.msstate.edu

**History**

Dr. Matthew Lavine  
Institute for Humanities Building,  
206 President's Circle  
662.325.3604  
mlavine@history.msstate.edu

**Interdisciplinary Studies**

Kasondra Harris  
513 Allen Hall  
662.325.2646  
kharris@deanas.msstate.edu

**Mathematics & Statistics**

Dr. Robert Banik  
460 Allen Hall  
662.325.7164  
banik@math.msstate.edu

**Medical Technology/Microbiology**

Dr. Brandy Roberts  
115 Harned Hall  
662.325.9547  
roberts@biology.msstate.edu

**Music**

Dr. Garrett Torbert  
1830 Music Building  
662.325.2161  
gtorbert@colled.msstate.edu

**Philosophy and Religion**

Dr. J. Robert Thompson  
1010 George Hall  
662.325.3070  
jrt@philrel.msstate.edu

**Physics and Astronomy**

Dr. Torsten Clay  
233 Hilbun Hall  
662.325.0628  
rtc29@msstate.edu

**Political Science**

Kate Sawaya  
190 Bowen Hall  
662.325.9282  
kem546@msstate.edu

**Psychology**

Jonathan Black  
110 Magruder Hall  
662.325.3202  
jblack@psychology.msstate.edu

**Social Work**

Mary Ann Dean  
207 Bowen Hall  
662.325.7868  
mdean@soc.msstate.edu

**Sociology**

Mary Ann Dean  
207 Bowen Hall  
662.325.7868  
mdean@soc.msstate.edu

**BUSINESS**

BUSINESS.MSSTATE.EDU

**Assistant Dean**

Vincent Young  
106 McCool Hall  
662.325.1890  
vyoung@business.msstate.edu

**Accounting**

Trina Pollan  
300 McCool Hall  
662.325.1631  
tpollan@business.msstate.edu

**Business Administration**

*Freshmen and Sophomores:*

RJ Matthews  
106 McCool Hall  
662.325.1890  
rmatthews@business.msstate.edu

*Juniors and Seniors:*

NaToya Sanders  
106 McCool Hall  
662.325.1890  
nsanders@business.msstate.edu

**Business Economics**

Vicki Mann  
106 McCool Hall  
662.325.1890  
vmann@business.msstate.edu

**Finance**

Vicki Mann  
106 McCool Hall  
662.325.1890  
vmann@business.msstate.edu

**Information Systems**

Kim McLeod  
106 McCool Hall  
662.325.1890  
kmcLeod@business.msstate.edu



## **BUSINESS (CONTINUED)**

BUSINESS.MSSTATE.EDU

### **International Business**

Dr. Travis Wiseman  
210 McCool Hall  
662.325.6701  
twiseman@business.msstate.edu

### **Management**

Kim McLeod  
106 McCool Hall  
662.325.1890  
kmcLeod@business.msstate.edu

### **Marketing**

Trovanda Johnson  
106 McCool Hall  
662.325.1890  
tjohnson@business.msstate.edu

### **Professional Golf Management**

Erika Scott  
309 McCool Hall  
662.325.3161  
escott@business.msstate.edu

### **Supply Chain Logistics**

Taylor Watson  
210 McCool Hall  
662.325.1890  
twatson@business.msstate.edu

## **EDUCATION**

EDUC.MSSTATE.EDU

### **COE Academic Coordinator Undergraduate Students**

Rachel Tentoni  
309 Allen Hall  
662.325.6638  
rtentoni@colled.msstate.edu

### **Biology, Chemistry & Physics Education**

Dr. Ryan Walker  
336 Allen Hall  
662.325.3681  
rwalker@colled.msstate.edu

### **Clinical Exercise Physiology**

Dr. Stamatis Agiovlavitis  
633 Rice Hall  
662.325.2963  
sa609@msstate.edu

### **Educational Psychology**

Dr. Erika Akins  
508 Allen Hall  
662.325.0387  
ema1@msstate.edu

### **Elementary Education**

Dr. Rebecca Robichaux-Davis  
364 Allen Hall  
662.325.7108  
rrr102@colled.msstate.edu

### **English Education**

Dr. Missy Hopper  
338 Allen Hall  
662.325.7118  
pfh7@colled.msstate.edu

### **Industrial Technology**

Dr. John Wyatt  
109 Industrial Education Building  
662.325.7257  
wyatt@colled.msstate.edu

### **Information Technology Services**

Dr. Wayne Yu  
102 Industrial Education Building  
662.325.0359  
wcyu@colled.msstate.edu

### **Kinesiology**

Rachel Foreman  
620 Rice Hall  
662.325.0884  
rforeman@colled.msstate.edu

### **Mathematics Education**

Dr. Dana Franz  
345 Allen Hall  
662.325.7117  
df76@colled.msstate.edu

### **Music Education**

Dr. Barry E. Kopetz  
Music Building A  
662.325.3070  
bkopetz@colled.msstate.edu

### **Neuromechanics**

Dr. Harish Chander  
299-9 Morrill Road, Office 122  
662.325.2963  
hchander@colled.msstate.edu

### **Physical Education & Coaching**

Dr. Brad Vickers  
627 Rice Hall  
662.325.2963  
bv44@msstate.edu

### **Social Studies Education**

Dr. Paul Binford  
357 Allen Hall  
662.325.7107  
pbinford@colled.msstate.edu

### **Special Education**

Dr. Kent Coffey  
337 Allen Hall  
662.325.2188  
kcoffey@colled.msstate.edu

### **Sports Administration**

Dr. Gregory Twietmeyer  
639 Rice Hall  
662.325.2963  
g.twietmeyer@msstate.edu

### **Strength & Conditioning**

Dr. Zachary Gillen  
299-10 Morrill Road, Office 106  
662.325.2963  
zmg43@msstate.edu

## **ENGINEERING**

BAGLEY.MSSTATE.EDU

### **Engineering Dean's Offices**

Dr. Robert A. Green  
160 McCain Engineering  
662.325.2267  
green@bagley.msstate.edu

### **Aerospace Engineering**

Machaunda Bush  
310 Walker Engineering  
662.325.3623  
mb2@msstate.edu

### **Biomedical Engineering**

Dr. Filip To  
223 Agricultural & Biological,  
Engineering Building  
662.325.3282  
fto@abe.msstate.edu

### **Biosystems Engineering**

Dr. Filip To  
223 Agricultural & Biological,  
Engineering Building  
662.325.3282  
fto@abe.msstate.edu

## ENGINEERING (CONTINUED)

BAGLEY.MSSTATE.EDU

### Chemical Engineering

Dr. Julie Jessop  
350 Swalm Chemical Engineering  
662.325.0199  
jessop@che.msstate.edu

### Civil & Environmental Engineering

Laura Dunn  
1042 Rula Engineering  
& Science Complex  
662.325.3051  
ldunn@cee.msstate.edu

### Computer Engineering

Alison Stamps  
135 Simrall Engineering  
662.325.3912  
astamps@ece.msstate.edu

### Computer Science

Angella Baker  
301 Butler Hall  
662.325.2642  
abaker@cse.msstate.edu

### Cybersecurity

Angella Baker  
301 Butler Hall  
662.325.2642  
abaker@cse.msstate.edu

### Electrical Engineering

Kylie Crosland  
135 Simrall Engineering  
662.325.3912  
kylie@ece.msstate.edu

### Industrial Engineering

Josie Guerry  
260 McCain Engineering  
662.325.0521  
josie@ise.msstate.edu

### Mechanical Engineering

Krystle Boyd  
314 Carpenter Engineering  
662.325.3261  
boyd@me.msstate.edu

### Petroleum Engineering

Dr. Julie Jessop  
350 Swalm Chemical Engineering  
662.325.0199  
jessop@che.msstate.edu

### Software Engineering

Angella Baker  
301 Butler Hall  
662.325.2642  
abaker@cse.msstate.edu

## FOREST RESOURCES

CFR.MSSTATE.EDU

### College of Forest Resources

Lanna Miller  
129 Thompson Hall  
662.325.9376  
lcm1@msstate.edu

### Forestry

Dr. Courtney Siegert  
347 Thompson Hall  
662.325.7481  
courtney.siegert@msstate.edu

### Sustainable Bioproducts

Dr. Beth Stokes  
205 Franklin  
662.325.5811  
ces8@msstate.edu

### Wildlife, Fisheries & Aquaculture

Dr. Leslie Burger  
259 Thompson Hall  
662.325.6686  
leslie.burger@msstate.edu

## VETERINARY MEDICINE

CVM.MSSTATE.EDU

### College of Veterinary Medicine

Meredith Nagel  
Wise Center  
662.325.7591  
meredith.nagel@msstate.edu

### Veterinary Medical Technology Program

Dr. Mandy Kohler  
Wise Center, 4th Floor,  
662.325.1103  
akohler@cvm.msstate.edu





## JUDY AND BOBBY SHACKOULS HONORS COLLEGE

662.325.2522 | HONORS.MSSTATE.EDU | SHACKOULSHC@HONORS.MSSTATE.EDU  
C210, GRIFFIS HALL

Academically talented Mississippi State students seeking to enhance and enrich their higher education experience should join the university's Shackouls Honors College. While the college enrolls more than 2,400 students, honors classes typically are limited to no more than 20. As a result, students receive individualized instruction from faculty members who challenge them to explore their full potentials.

Some advantages of being a part of the Shackouls Honors College include:

- All Honors freshmen typically live together in Griffis and Nunnelee halls, where they are encouraged to academically excel while enjoying the benefits of a dynamic social life. Both feature state-of-the-art classrooms. Griffis is home to college offices, and both halls are located in the Zacharias Village.
- Freedom to explore and be challenged in small classes taught by top professors.
- Opportunity to work directly with research faculty members.
- Individualized mentoring and assistance with applications for national and international fellowships and awards.
- Financial support for a variety of global adventures in, among other locations, England, Scotland, Ireland, Australia, Jamaica, Ecuador, Italy, and Spain.
- Opportunities to represent the college's student body and hone leadership skills by service on the Honors Council.
- Opportunities to give back to society through community service programs.
- Afforded priority registration status within an honor student's class cohort.
- Honors Diploma\* and honors distinction on transcripts.

\*Honors Diploma awarded to those students who successfully complete the *Cursus Honorum*:  
[honors.msstate.edu/curriculum/cursus-honorum](https://honors.msstate.edu/curriculum/cursus-honorum)



# NEW STUDENT *checklist*



## ACCOUNT SERVICES

662.325.2071 | [PAYMYBILL.MSSTATE.EDU](mailto:PAYMYBILL.MSSTATE.EDU) | [STUDENTACCOUNTS@MSSTATE.EDU](mailto:STUDENTACCOUNTS@MSSTATE.EDU)  
158 GARNER HALL

Tuition is the basic, comprehensive, multi-purpose charge all students must pay as a condition for enrollment. Assessed tuition and required fees cover the costs of education, as well as some student services or facility operations at Mississippi State.

To view current tuition and fee rates, visit [controller.msstate.edu/accountservices/tuition](https://controller.msstate.edu/accountservices/tuition).

Semester charges must be paid prior to the start of the term. Schedules may be canceled for students who have not paid their account or enrolled in a payment plan by the due dates shown below:

Fall Term: **August 1**  
Spring Term: **January 1**  
Summer Term: **July 1**

## ACCOUNT BILLING

Because students are responsible for any charges to their Mississippi State accounts, the university provides a consolidated statement online around the 15th of each month, with a payment due date of the 1st of the following month. Notification emails will be sent to the student's [msstate.edu](mailto:msstate.edu) email address monthly.

Account details are made available 24/7/365 through QuikPAY. QuikPAY is an online service site where students can make payments, review their account transactions and monthly billing statements, or authorize a payer to access account information and make payments on their behalf. To enter QuikPAY, log in to the Mississippi State myState portal at [my.msstate.edu](https://my.msstate.edu) and click "Make a Payment" in the "Financials" section of the Main page.

Log in to QuikPAY and view your account

## PAYMENT PLANS

Mississippi State is pleased to offer payment plans that will allow you to pay for tuition, residence halls, meal plans and other expenses through monthly installments.

Enroll in a payment plan (optional) in the QuikPAY system.  
Learn more at [controller.msstate.edu/accountservices/payment/plans](https://controller.msstate.edu/accountservices/payment/plans).

## AUTHORIZED PAYERS

Students may authorize other users, typically a parent, to access their account information and make payments to their account.

- Establish an authorized payer.

Visit [controller.msstate.edu/accountservices/resources/payer](https://controller.msstate.edu/accountservices/resources/payer) to view the steps to authorize a payer.

## ACCOUNT REFUNDS

If a student's aid exceeds charges on the account, they may be entitled to a refund. Student refunds are made available through Mississippi State's automated service. Two options are available:

- **e-Refund (Direct Deposit)** to a student's checking or savings account. This is the preferred method as it is fast and safe; e-Refunds are processed on a daily basis. A confirmation email is sent to the student's msstate.edu email address. Bank account information must be updated whenever account changes have been made to ensure delivery.
- **Paper check refunds** will be processed on a weekly basis and will be mailed to the student's home address on file with the university.

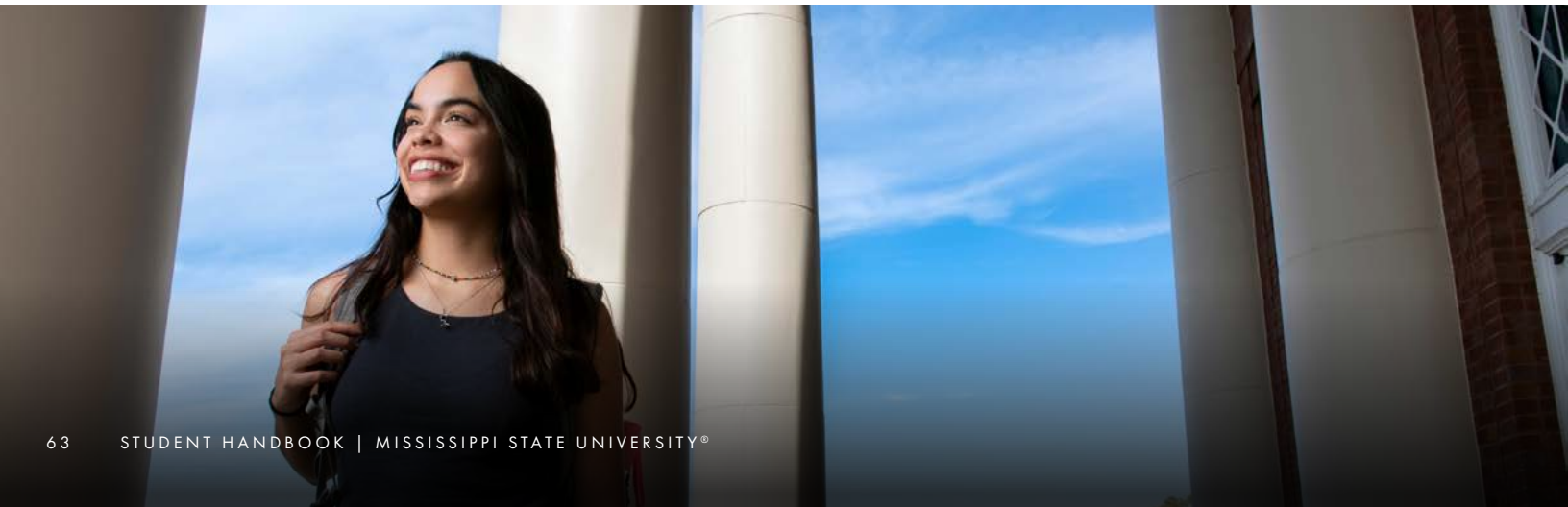
- Enroll in direct deposit.

Learn more at [controller.msstate.edu/accountservices/tuition/refunds](https://controller.msstate.edu/accountservices/tuition/refunds).

## PAYMENT METHODS

All payments to Mississippi State require use of a student's NetID or MSU ID number. Payments are accepted as follows:

- **Online through QuikPAY:** e-Check or credit/debit cards (MasterCard, Discover, American Express, and Visa). *Note:* e-Check payments are free. Credit/debit card payments are assessed an additional 2.8% service/convenience fee and are accepted online only.
- **By mail:** check or money order. Please mail to the following address:  
Account Services  
P.O. Box 5328  
Mississippi State, MS 39762-5328
- **In person at Garner Hall:** cash, check, or money order
- **By telephone:** e-Check



# FINANCIAL AID

662.325.2450 | SFA.MSSTATE.EDU | FINANCIALAID@MSSTATE.EDU | GARNER HALL

Financial assistance to help pay for higher education comes primarily in the following forms:

- Grants and scholarships that don't have to be repaid.
- Loans, borrowed money that must be paid back.
- Federal Work-Study to help cover expenses besides tuition and room and board, including books, supplies, transportation, etc.

Also, Mississippi State's Center for America's Veterans was created to assist students that are current or former members of the military or their dependents. For complete information about veteran and military education benefits, contact the center at **662.325.6719** or **veterans.msstate.edu**.

## SCHOLARSHIPS

Students must be admitted to Mississippi State in order to apply for university scholarships. Once admitted, students should log in to their myState account, then complete, save, and submit the General Scholarship Application. After submitting this general application, additional opportunities may be recommended in your myState account based on your test scores, GPA, leadership and service, and applicant record. More opportunities, like departmental scholarships, may become available over time.

## GRANTS

Grants provided to students by federal, state and institutional organizations are awarded on the basis of a family's financial need. The state of Mississippi provides several grants for in-state residents not based on financial need and in amounts that may vary each year. To apply each year:

- Fill out the Free Application for Federal Student Aid form.
- Mississippi resident students also should complete the online application at **msfinancialaid.org**.

Other sources of scholarships and financial assistance may be available through hometown clubs, churches and community organizations.

## LOANS

Major federal student loans at MSU include:

- Federal Direct Stafford Loans (subsidized, based on financial need; unsubsidized, not based on financial need)
- Federal Direct PLUS Loan (credit based loan program for a dependent student's parents)

On some loans, students may choose not to make payments while enrolled at least half-time. Student borrowers must start repaying loans, however, after leaving school or dropping below half-time enrollment status. Students may choose to pay interest only while in school on the Direct Unsubsidized Stafford loan. Students qualifying for a loan will find out through the award letter. After the offer is accepted, completion of additional forms will be required. The award letter and Mississippi State Student Financial Aid website at **sfa.msstate.edu** will provide details.



## WORK-STUDY AND STUDENT JOBS

Work-study and student jobs taking place part-time on campus are additional ways to help offset educational expenses. Some tips here include:

- A parent and student should submit FAFSAs early.
- Any amount for which the student qualifies will be indicated in the award letter and is the maximum amount that may be earned through the Federal Work-Study Program during the school year.
- A typical work week usually involves 10-15 hours.
- Overtime shouldn't be considered since a student cannot earn more than the amount listed in the award letter.
- Since paychecks are issued semi-monthly, students should ensure the money goes to good use (for instance, textbooks instead of snacks).
- Because it covers hours actually worked during the previous pay period, the semi-monthly paycheck will not be available at the beginning of the semester for tuition and other charges.
- Within the first three workdays, a student must provide the employing office with an original passport, Social Security card or birth certificate, along with their student ID card or driver's license.

For details on grants, loans, and work study, go to [sfa.msstate.edu](https://sfa.msstate.edu).

## HOW TO APPLY FOR AID

### COMPLETE THE 2024-25 FREE APPLICATION FOR FEDERAL STUDENT AID (FAFSA)

To apply for federal and state financial aid, first complete the 2024-25 Free Application for Federal Student Aid, the primary form for all types of federal aid, as well as some state and institutional aids. The steps to complete the FAFSA include:

- Both parent and student will need to use their 2022 federal tax return information when completing the 2024-25 FAFSA. Your contributors will each need their own [studentaid.gov](https://studentaid.gov) account before they can enter the FAFSA form.
- Before beginning the FAFSA, go to [studentaid.gov](https://studentaid.gov) and create a U.S. Department of Education Federal Student Aid identification.
- Once the FSA IDs are received, complete the 2024-25 FAFSA on the same [studentaid.gov](https://studentaid.gov) website.
- Once the FAFSA is completed, the student will receive a confirmation number.
- Mississippi State will receive an electronic copy of the student's FAFSA within seven business days.
- Regularly check the student myState account for FAFSA updates.

To receive maximum consideration for financial aid, it is critical for parents and students to submit the FAFSA and any required supporting documentation. The earlier a student submits the documents, the better chance he or she will have for available grants and work-study opportunities.



## IMPORTANT FACTS ABOUT FAFSA

Remember that some federal supplemental grants and institutional grants have limited funding and may be depleted by the time late applications are received. If the deadline is missed, any financial aid for which the student does qualify may not be finalized by the time classes start in the fall.

The Federal School Code is **002423** when listing Mississippi State University as the institution to receive the FAFSA results.

The student is responsible for periodically checking the FAFSA website regarding the application status or processing problems notifications. Status checks may be made 24/7 through myState using the MSU NetID and NetPassword.

Once admitted to MSU and after FAFSA results and other required documents have been received, Mississippi State's Student Financial Aid Department will determine the student's eligibility for aid and process an award. The student will be prompted by letter or e-mail to complete the online MSU Award Notification Letter.

## STATE AID

Student aid from the state of Mississippi is for Mississippi residents only. (ex. Mississippi Resident Tuition Assistance Grant, Mississippi Eminent Scholars Grant, Nissan Scholarship Program (March 1 deadline), H.E.L.P. Program) Complete the application as soon as possible after October 1 each year for the coming school year with application deadlines of March 31 and September 15. Apply online at [msfinancialaid.org](https://msfinancialaid.org).

Students must earn 15 hours to be eligible for the following state aid programs:

- Higher Education Legislative Plan for Needy Students Scholarship (HELP)
- Mississippi Resident Tuition Assistance Grant (MTAG)
- Mississippi Eminent Scholars Grant (MESG)
- Law Enforcement Officers and Firemen Scholarship (LAW)

The Mississippi Office of Student Financial Aid in Jackson will communicate with Mississippi students who submit an online state-aid application regarding proof of residency documentation, other required documents and state-aid award amounts. For additional information, call **1.800.327.2980**.

## FINALIZE THE AWARD

Entering students will receive an "informational" award notification that will display initial awards that have been processed. The award recipient will be directed to myState to log in using his or her MSU NetID and NetPassword. The final step involves accepting or declining the awards and completing the online Supplemental Information Form.





## RECEIVING FINANCIAL AID

Even after completing all FAFSA paperwork and receiving an award notice, a student is not yet done with the financial aid process. Some final steps include:

- A requirement for first-time recipients of a federal student loan to complete online entrance counseling that basically outlines what the loan is meant for, and responsibilities that the student must now manage the account. Go to **studentaid.gov** to complete the Stafford Entrance Loan Counseling.
- For first-time students borrowing with a Federal Direct Stafford Loan, there is a requirement to complete and submit a Master Promissory Note. Parents may also be required to complete a similar form for the Federal Direct PLUS Loan.
- Grant, scholarship, and loan funds typically are available at the beginning of each semester. Work-study funds are earned and students are paid twice per month for the hours actually worked during the previous pay period.

## LOSS OF AID AWARDS

Students receiving financial aid who withdraw or drop courses during a semester may have to repay funds already received. In some cases, educational award funding from external sources, other than those shown in the award letter, may cause what is known as an “over award” that results in a reduction or cancellation of federal, state or institutional awards previously provided.







## HOW TO ACCEPT OR DECLINE SCHOLARSHIPS AND FINANCIAL AID

### SCHOLARSHIPS

662.325.3076  
ADMISSIONS.MSSTATE.EDU/SCHOLARSHIPS  
SCHOLARSHIPS@MSSTATE.EDU  
MONTGOMERY HALL

- Log in to your myState account.
- Under "Apps & Services," click "Banner."
- Click "Student."
- Under the "Financial Aid and Scholarship" column, click the link stating "Accept/Decline Scholarship Awards."
- This will take you to a new window for the Scholarship Portal.
- Click the "Sign In" button. (This is located on the top right corner for computers and the bottom right corner for tablets or smartphones).
- Click the "Sign in with your Institution" button. If needed, login with your myState netID and netPassword.
- Click the "My Applications" heading toward the top left corner.
- Click on your scholarship name in the "Needs Attention" section to read the terms and conditions of your scholarships. Accept or decline your scholarship offer.

### FINANCIAL AID

662.325.2450 | SFA.MSSTATE.EDU  
FINANCIALAID@MSSTATE.EDU  
GARNER HALL

- Log in to your myState account.
- Under "Apps & Services," click "Banner."
- Click "Student."
- Under the "Financial Aid and Scholarship" column, click the link stating "Accept/Decline Financial Aid Awards."
- Complete the 3-step process to "View Awards," answer questions and "Accept/Decline Awards." You will progress through the steps using the next button.







## STUDENT MONEY MANAGEMENT CENTER

662.325.8516 | [SMMC.MSSTATE.EDU](https://smmc.msstate.edu)

[MONEYMENTORS@MSSTATE.EDU](mailto:MONEYMENTORS@MSSTATE.EDU) | [@MSSTATE\\_SMMC](https://twitter.com/MSSTATE_SMMC)

GARNER HALL

The Student Money Management Center is a free student support service dedicated to providing personal finance guidance and resources to all Mississippi State students.

Students can meet with a Money Mentor coach. Coaches work with students one-on-one and step-by-step on to answer personal finance questions and establish goals. This service is free and confidential.

Schedule a session with a Money Mentor at [smmc.msstate.edu](https://smmc.msstate.edu) if you have questions about:

- Paying for school
- Getting ahead of the tuition bills
- Building credit
- Budgeting
- Setting financial goals



BUDGETING



STUDENT LOANS



CREDIT



SAVINGS



INVESTING



& MORE!

Students may invest in their financial futures by scheduling a free peer coaching session to empower their financial success.





## CENTER FOR STUDENT ACTIVITIES

662.325.2930 | [UNION.MSSTATE.EDU/ACTIVITIES](http://UNION.MSSTATE.EDU/ACTIVITIES)

@MSSTATE.STUDENTACTIVITIES

COLVARD STUDENT UNION – 3RD FLOOR

Mississippi State wants students to try new things. Encourage your student to take risks - join a registered student organization, try a new sport, or apply for a student leadership position. The only way to know if an activity is right is to give it a try. If an organization doesn't seem like a good fit, there is always an opportunity to try something else.

### COWBELL CONNECT

Mississippi State boasts over 300 student organizations, which provide ample ways for students to get involved, meet other people, and make the most of their college experience. The best way to view these student organizations is by visiting the Cowbell Connect website, our student organization database, at [cowbellconnect.msstate.edu](http://cowbellconnect.msstate.edu), which will allow students to create a profile, search organizations, see upcoming events, and find ways to get involved.

### DAWG DAYS

Dawg Days is an exciting collection of activities and events held to welcome new freshmen and transfer students to Mississippi State. Students can join us daily, August 16 through August 25, and enjoy all the food, music, movies, Southern hospitality, and fun that Mississippi State has to offer! For Dawg Days' complete schedule, visit [dawgdays.msstate.edu](http://dawgdays.msstate.edu).

### LYCEUM SERIES

The annual Lyceum Series offers exposure to the talents of national artists in a variety of performance areas, ranging from music to drama to dance. These programs are an essential part of expanding cultural and educational horizons. Mississippi State students can attend all events for free. For ticket information and future performances, please visit [lyceum.msstate.edu](http://lyceum.msstate.edu).

### STUDENT ASSOCIATION

The Student Association is a student-run organization that acts as the governing body for the students. The student leaders are responsible for bringing fun, imaginative, diverse, educational, and entertaining events and programs to Mississippi State. To learn more about the Student Association and how to get involved, please visit [sa.msstate.edu](http://sa.msstate.edu).

### DAWGS AFTER DARK

Dawgs After Dark is a series of late-night and weekend events, which allows students to experience a variety of social events, including laser tag, movie nights, escape rooms, and more. The Dawgs After Dark series—usually held on Thursday, Friday or Saturday nights from 8-11 p.m.—is free for students.



## FRATERNITY AND SORORITY LIFE

662.325.2930 | GREEKS.MSSTATE.EDU | COLVARD STUDENT UNION – 3RD FLOOR

Fraternities and sororities at Mississippi State promote a balance of academics, leadership, community service/philanthropy, and social events. Members of chapters at Mississippi State consistently maintain higher grades, graduate at a higher percentage, and find jobs or professional school placements at a higher rate than non-Greek affiliated students. Members volunteer in the local community and become involved in other campus organizations. Students involved in fraternities and sororities report a higher sense of belonging and overall happiness at the university.

For a list of all organizations and more information on ways to join, visit [greeks.msstate.edu](http://greeks.msstate.edu).

- Panhellenic Council - Sorority Recruitment: **August 15-20**
- National Pan-Hellenic Council - Icebreaker: **August 21**
- Interfraternity Council - Fraternity Recruitment: **August 23-27**
- National Pan-Hellenic Council & Multicultural Greek Council - Going Greek 10: **August 25**

## CENTER FOR AMERICA'S VETERANS

662.325.6719 | VETERANS.MSSTATE.EDU | @MSSTATE\_CAV | NUSZ HALL

The G.V. "Sonny" Montgomery Center for America's Veterans is a national leader in providing comprehensive support through a university-based Veteran Resource Center. Located in Nusz Hall, the 7,500-square-foot facility includes private study rooms, a computer lab, complimentary printing services, student lounge, multipurpose meeting room, and the Student Veteran Association office. The center offers a variety of student services designed to support the unique needs of today's military-connected students, including veterans, service members, and dependents. Services include:

- Veteran Affairs Educational Benefits (G.I. Bill), counseling, and processing
- Scholarships
- Non-resident tuition waiver
- Mississippi Air/Army National Guard General Scholarship Program
- Veteran Affairs work-study program
- US Air Force, Air University Associate to Baccalaureate Cooperative Online Program
- Federal Tuition Assistance for all Military Service Branches





## STUDENT LEADERSHIP AND COMMUNITY ENGAGEMENT

662.325.0244 | [SLCE.MSSTATE.EDU](http://SLCE.MSSTATE.EDU)  
MOSELEY HALL - C313 (3RD FLOOR)

The Office of Student Leadership and Community Engagement (SLCE) at Mississippi State strives to transform experiences through leadership education and engaging service experiences. SLCE aspires to educate, enlighten, and empower tomorrow's leaders.

### MAROON VOLUNTEER CENTER

The Maroon Volunteer Center coordinates service opportunities throughout campus and the local community. Signature events include Service Dawgs Day, MLK Day of Service, Mississippi State's BIG Event, and Alternative Break Trips. For more information, go to [mvc.msstate.edu](http://mvc.msstate.edu).

### MONTGOMERY LEADERSHIP PROGRAM

Established in 2006, the Montgomery Leadership Program (MLP) is a selection-based cohort experience for sophomores, juniors, and seniors. The program is a multi-semester immersive leadership experience that culminates with a capstone project. To learn more, visit [mlp.msstate.edu](http://mlp.msstate.edu).







## OFFICE OF STUDY ABROAD

662.325.8929 | [STUDYABROAD.MSSTATE.EDU](http://STUDYABROAD.MSSTATE.EDU)  
[@MSSTATESTUDYABROAD](https://www.instagram.com/MSSTATESTUDYABROAD)

The Office of Study Abroad presents Mississippi State students with an invaluable opportunity to broaden their horizons and gain fresh perspectives on the world while immersing themselves in a vibrant new culture. Those who engage in study abroad develop intercultural communication and problem-solving skills that are not easily attained in their home environment. By living in a new culture and conversing in a different language, students hone their abilities to overcome challenges. Furthermore, studying abroad enhances students' employment prospects, as their degree gains added value through their international experience.

Mississippi State's study abroad programs offer students a chance to apply for numerous scholarship opportunities, both locally and nationally. Financial aid options are available to make studying abroad more financially feasible. This past year, Mississippi State had a record number of students participating in study abroad programs, and the Office of Study Abroad looks forward to further expanding Mississippi State's reputation as an internationally-minded community. For more information, visit [studyabroad.msstate.edu](http://studyabroad.msstate.edu).







## DIVISION OF ACCESS, OPPORTUNITY AND SUCCESS

662.325.2859 | ADI.MSSTATE.EDU

@AOS\_MSSTATE

COLVARD STUDENT UNION - SUITE 220

The Office of Access and Success (AOS) provides students with resources and support throughout their college experience. From career exploration to tutoring, our office prepares students for success in college, graduation and beyond. Get involved with AOS's student organizations and programs:

- **The Promise Scholars Program** is designed to help fulfill Mississippi State's land-grant mission by offering academic scholarships and other opportunities to entering first-year students based on parental income. Students who are selected for the program will receive academic support, career exploration opportunities, and financial assistance.
- **The Thrive Scholars Program** provides independent-status students with the comprehensive support necessary in navigating and maximizing their college experience as they pursue degree completion at Mississippi State.
- **TRiO Student Support Services** assists first-generation, low-income students with documented disabilities in receiving the support, services, and resources needed to navigate their college experience and graduate from Mississippi State.





# HOLMES CULTURAL DIVERSITY CENTER

662.325.2033 | HCDC.MSSTATE.EDU | @MSSTATE\_HCDC  
COLVARD STUDENT UNION - SUITE 222

Holmes Cultural Diversity Center (HCDC) is a home away from home, providing opportunities for campus involvement and a welcoming space for students of different backgrounds. Students are encouraged to get involved with HCDC's student organizations and programs.

- **The Black Student Association** serves as the liaison between university administration and the African American student population. The Black Student Association is the official umbrella organization that all African American student organizations on campus fall under.
- **Black Voices**, established more than four decades ago, is a group of students committed to worshipping through the ministry of music and song.
- **F.L.A.R.E.** is a student organization, providing a welcoming environment in which individuals from all spectrums of the LGBTQ+ community can be themselves and feel affirmed.
- **The Indigenous Students & Allies Association** is an organization that serves to unify Indigenous students, faculty, staff and other communities interested in learning about Indigenous culture.
- **The Intelligent Dignified Elegant Ambitious Leaders (I.D.E.A.L.) Woman Program** is a leadership and professional development organization for minority women who value academic excellence, professional growth, leadership and community service.
- **The International Student Advisory Board** is a group of students, hailing from every corner of the world that aims to assist international students throughout their collegiate experience.
- **The Latino Student Association** is a group that works to foster cultural awareness, leadership skills and educational success for the Latin student community.
- **Linking International Students in the Community (L.I.N.C.)** provides an opportunity for international students to learn about American culture and traditions through a family or mentor.
- **Men of Excellence** is a program that provides educational, social and community services to enhance the personal, professional and social growth in male students of color.
- **The National Association for the Advancement of Colored People (NAACP)** works to improve the political, social and economic status of minority groups. It works to eliminate prejudice and to spread awareness of the adverse effects of racial discrimination.





## MSU ID CARD

All Mississippi State students may obtain their official university identification card through the Campus Card Office in 108 Allen Hall. The card should be carried at all times since it is required for a variety of important services, including meal plans, residence hall access, admissions to certain athletic events, class attendance tracking, and at Account Services.

## WHAT HAPPENS IF A STUDENT LOSES THEIR MSU ID CARD?

When an MSU ID card is lost or stolen, a student should immediately report it by contacting the Campus Card Office at **662.325.3387** or, after business hours, the MSU Police Department at **662.325.2121**. The MSU ID card will then be deactivated and become non-functional. To obtain a new MSU ID card, visit the Campus Card Office as soon as possible. A replacement fee will be incurred and automatically billed to the student's account.

## INFORMATION TECHNOLOGY SERVICES

662.325.0631 | 888.398.6394 | ITS.MSSTATE.EDU | SERVICEDESK@MSSTATE.EDU  
117 ALLEN HALL

The mission of Information Technology Services (ITS) is to position Mississippi State University as a secure, collaborative, and innovative leader in technology.

Hours of operation are:

- Sunday:** 1 p.m. - 10 p.m. (midnight by phone)
- Monday - Thursday:** 8 a.m. - 10 p.m. (midnight by phone)
- Friday:** 8 a.m. - 5 p.m.

## PERSONAL COMPUTERS

Students who do not own a personal computer may take advantage of several university open-access computer labs. However, certain colleges and departments at Mississippi State require their students to own a personal computer, and may require or recommend specific hardware and software that could vary from the university baseline specifications. Students should check the corresponding college or department for recommended computer specifications and guidelines.

These units are known to have specific computer requirements:

- Adkerson School of Accountancy
- Bagley College of Engineering
- College of Business
- Communication
- Landscape Architecture
- School of Architecture
- Interior Design Program
- College of Veterinary Medicine

A student should follow the minimum specifications for desktop and laptop computers at [servicedesk.msstate.edu/computer/studentspecs](https://servicedesk.msstate.edu/computer/studentspecs).

## LAPTOP MINIMUM SPECIFICATIONS

**Processor:** Latest Generation Intel Core i5 or equivalent

**Memory:** 8 GB

**Disk storage:** 250 GB Solid State Drive (SSD)

**Network connectivity:** 100/1000 Mbps Ethernet and/or 802.11n/ac/ax wireless

**Other external ports:** USB

**Warranty:** 3-year on-site manufacturer's warranty

**Operating system (64-bit):** Latest version of Windows or macOS

## DESKTOP MINIMUM SPECIFICATIONS

**Processor:** Latest Generation Intel Core i5 or equivalent

**Memory:** 8 GB

**Disk storage:** 250 GB Solid State Drive (SSD)

**Network connectivity:** 100/1000 Mbps Ethernet

**Other external ports:** DVD-RW/CD-RW drive

**Warranty:** 3-year on-site manufacturer's warranty

**Operating system (64-bit):** Latest version of Windows or macOS

**NOTE:** Chromebooks are not recommended.

## SAFE COMPUTING TIPS

- Use long, hard-to-guess passphrases and never share NetPasswords.
- Duo, Mississippi State's Multi-Factor Authentication, is required for Mississippi State students. For more information go to [servicedesk.msstate.edu/mfa](https://servicedesk.msstate.edu/mfa).
- Use anti-virus and anti-spyware software that is updated regularly.
- Configure computers to receive automatic updates.
- Download software only from trusted sources after reading terms and conditions.
- Understand that unauthorized downloading or sharing of copyrighted materials such as music and movies is illegal and organizations such as the RIAA and MPAA vigorously pursue violators. For more information see [filesharing.msstate.edu](https://filesharing.msstate.edu).
- While social networking sites such as Facebook and Twitter have their place, students should exercise caution when posting information of a personal or sensitive nature on such sites. Always think before posting because that information will likely remain on the Internet for a long time.



## SOFTWARE

Mississippi State's policy requires that all computers accessing the university network have anti-virus software installed. Both Windows and macOS have built-in anti-virus programs (Windows Defender for Windows and XProtect for macOS) and other security features designed to keep you safe and secure.

Students may download software such as Microsoft Office, SPSS, SAS, Autodesk products, and others at no cost from [servicedesk.msstate.edu/software](https://servicedesk.msstate.edu/software). In addition, students may download a copy of the Microsoft Windows 11 Education operating system at no cost from Microsoft Azure at [azureforeducation.microsoft.com/devtools](https://azureforeducation.microsoft.com/devtools). Other discounted software is available to students through Barnes & Noble's campus e-store at [thinkEDU.com/BN](https://thinkEDU.com/BN).

## NETWORK CREDENTIALS

### NETID

Each Mississippi State student is issued a unique electronic network identifier, or NetID, which is used to access a variety of Mississippi State information technology systems and services on the campus network.

### NETPASSWORD

A NetPassword is used in conjunction with a NetID when logging in to Mississippi State information technology systems and services. The NetPassword website, [netpassword.msstate.edu](https://netpassword.msstate.edu), is used to:

- Set an initial NetPassword prior to logging in to Mississippi State information technology systems and services for the first time
- Change a NetPassword periodically to keep it secure
- Reset a forgotten NetPassword

### DUO

Duo is Mississippi State's multi-factor authentication (MFA) application which adds another layer of security when logging in to MSU information technology systems and services. The first factor required to log in is a student's NetID/NetPassword. The additional factor is something students have, typically their smartphone or tablet. Therefore, even if a hacker is able to get a student's NetID/NetPassword, they should not be able to log in to a student's account because they do not have their additional factor. For more information visit [servicedesk.msstate.edu/mfa](https://servicedesk.msstate.edu/mfa).





## NETWORK CONNECTIVITY

Access to the MSU network and all its resources are provided via comprehensive wireless coverage in residence halls and in all major buildings. Students with a personal computer are encouraged to have the necessary hardware for both wired and wireless connectivity. Although wireless access is convenient, a wired connection is significantly faster and more reliable. Residence halls have high-speed Ethernet ports. Each port can accommodate a single computer. To take advantage of this high-speed network connection, students must have an Ethernet adapter in their computer and an Ethernet patch cable. This cable connects the Ethernet adapter in the computer to one of the room's Ethernet ports.

### WIRELESS NETWORK CONNECTIVITY

Wireless network coverage is available in most buildings at the University. Instructions for configuring computers and mobile devices for the Mississippi State wireless network, eduroam, are available on the ITS website at [servicedesk.msstate.edu/eduroam](https://servicedesk.msstate.edu/eduroam). Also, alternative wireless network authentication methods are available for consumer devices, such as gaming consoles, in residence halls. Instructions for configuring consumer devices for the Mississippi State wireless network are available on the ITS Service Desk website at [servicedesk.msstate.edu/msu3](https://servicedesk.msstate.edu/msu3). Wireless routers are not permitted to be installed by students.

### MYSTATE

myState, Mississippi State's web portal, offers single sign-on access to systems and services such as Banner, Canvas, and eForms. myState is available at [my.msstate.edu](https://my.msstate.edu) or through the myState link located in the upper right portion of the Mississippi State home page, [msstate.edu](https://msstate.edu).

### MYBANNER

myBanner allows students access to a number of services including registration, academic records, financial aid and scholarship information, account information, enrollment verification, and personal information. myBanner is available within the myState portal by selecting the "Banner" page from "Apps & Services" sidebar menu.

### CANVAS

Canvas is the learning management system (LMS) used in the delivery of online instruction at Mississippi State. Canvas is accessed through the myState portal by selecting "Canvas" from the "Apps & Services" sidebar menu or by going to [canvas.msstate.edu](https://canvas.msstate.edu).

### CANVAS STUDENT MOBILE APP

The Canvas Student Mobile app allows access to Canvas courses from mobile devices. The app allows students to view grades and course content, submit assignments, keep track of course work, send and receive messages, post to discussion groups, and watch videos. The app is available at no cost for iOS and Android devices from the Apple App Store and the Google Play Store.

### PARENT PORTAL

Students can give parents and others access to view a summary of their academic information including class schedule, grades, absences, account balance, financial aid, and meal plan use. To grant someone access to the Parent Portal, go to the myState portal, choose "Banner" from the "Apps & Services" sidebar, and under the "Student" drop down menu, choose "F.E.R.P.A. Release & Parent Portal Access."



## MICROSOFT 365 STUDENT EMAIL

Mississippi State assigns every student an official email address of [netid@msstate.edu](mailto:netid@msstate.edu) and uses this email address for official communication with students. It is important that students regularly check their Microsoft 365 email (Outlook) and maintain it in good working order. To access Microsoft 365, select Microsoft 365 from the Apps & Services sidebar menu of the myState portal or browse to [m365.msstate.edu](https://m365.msstate.edu).

## OPEN COMPUTER LABS

Open computer labs are available for student use in Mitchell Memorial Library. These open labs have both Mac and Windows computers, as well as laser printers. Charges for printing are automatically assessed and posted to the student's Banner account. Rates for printing, as well as operating hours and other information, can be found at [servicedesk.msstate.edu/labs](https://servicedesk.msstate.edu/labs).

## JUMP START FOR NEW STUDENTS

- Set your initial NetPassword. Use a hard-to-guess password, don't share it with anyone, and don't use it elsewhere on the internet.
- Verify registration of your mobile devices in Duo.
- Connect to the eduroam wireless network using your [netid@msstate.edu](mailto:netid@msstate.edu) email address and NetPassword.
- Update online directory information such as your Maroon Alert cell phone number and choose which directory information other students can see.
- Verify operating system and browser updates are being automatically installed.
- Verify anti-virus software is installed and up-to-date.
- Download the Canvas Student app.
- Grant Parent Portal access as appropriate.
- Never open email attachments from unknown people/senders and look out for potential phishes and scams.
- Be cautious of all requests for personal information.
- Visit only trustworthy web sites and be alert for web sites that try to imitate Mississippi State resources or solicit personal information.
- Visit [filesharing.msstate.edu](https://filesharing.msstate.edu) to understand the consequences of illegally sharing copyrighted materials such as movies and music.
- Be careful about what you post on social media.
- Make regular backup copies of data, especially if essential to school or work.
- Never leave a laptop or mobile device unattended in a public setting.
- ITS will NEVER ask for your NetPassword; be wary of anyone who does.
- The ITS Service Desk is available to answer questions and assist as needed.



MISSISSIPPI STATE UNIVERSITY™  
ALUMNI ASSOCIATION



MAROON  
& WHITE

*Traditions*

Bulldog Network

Tradition Keeper

Bingo Night



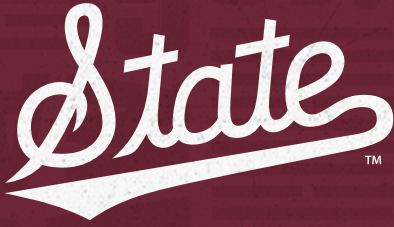
Study Break

Class Ring

Senior Celebration

ALUMNI.MSSTATE.EDU





# ATHLETICS

## STUDENT ALL-SPORT 2024-2025 *Pass*

[HAILSTATE.COM/STUDENTTICKETS](http://HAILSTATE.COM/STUDENTTICKETS)

### 2024 HOME FOOTBALL SCHEDULE

**EASTERN KENTUCKY | AUGUST 31**

FIRST SATURDAY IN STARKVEGAS

**TOLEDO | SEPTEMBER 14**

**FLORIDA | SEPTEMBER 21**

**TEXAS A&M | OCTOBER 19**

**ARKANSAS | OCTOBER 26**

**UMASS | NOVEMBER 2**

**MISSOURI | NOVEMBER 23**

### ATHLETIC INTERNSHIPS

[HAILSTATE.COM/EMPLOYMENT](http://HAILSTATE.COM/EMPLOYMENT)

CHECK FOR INTERNSHIPS THROUGHOUT OUR ATHLETIC DEPARTMENT IN AREAS LIKE MARKETING, FAN EXPERIENCE, SEC NETWORK, GAME OPS, STRENGTH AND CONDITIONING, CREATIVE VIDEO, PHOTOGRAPHY AND CREATIVE DESIGN.

### MAROON MEMORIES

[HAILSTATE.COM/MEMORIES](http://HAILSTATE.COM/MEMORIES)

MISSISSIPPI STATE ATHLETICS STRIVES TO GIVE YOU THE BEST GAME DAY EXPERIENCE POSSIBLE BY OFFERING BEHIND-THE-SCENES ACCESS AND UPGRADES FOR ALL FANS. LET US ENHANCE YOUR GAME DAY EXPERIENCE! BEGIN MAKING YOUR MAROON MEMORIES TODAY!



PRESENTED BY 

### HAIL STATE REWARDS

[HAILSTATE.COM/REWARDS](http://HAILSTATE.COM/REWARDS)

#### WHAT IS HSR?

HAIL STATE REWARDS IS THE FREE STUDENT PROGRAM THAT REWARDS STUDENTS FOR ATTENDING MSU ATHLETIC EVENTS. AS STUDENTS EARN POINTS, THEY CAN REDEEM THEM FOR GREAT GEAR AND PRIZES! THE POINTS YOU EARN NOW AS A STUDENT WILL GIVE YOU A HEAD START TOWARDS BULLDOG CLUB PRIORITY POINTS ONCE YOU GRADUATE!

#### HOW DO YOU JOIN?

- THERE ARE TWO WAYS TO START EARNING POINTS TODAY:
1. DOWNLOAD THE HAIL STATE REWARDS APP! JUST SEARCH HAIL STATE REWARDS IN THE APP STORE OR GOOGLE PLAY STORE NOW!
  2. GO TO [HAILSTATE.COM/REWARDS](http://HAILSTATE.COM/REWARDS) AND CLICK "JOIN" TO GET STARTED!

#### HOW DO YOU START EARNING POINTS?

ONCE YOU BECOME A HSR MEMBER, BE SURE TO CHECK-IN TO THE APP TO RECEIVE YOUR POINTS! HAVING THE HSR APP PUSH NOTIFICATIONS TURNED ON AND FOLLOWING @HAILSTATEREWARDS ON TWITTER WILL KEEP YOU IN THE KNOW FOR UPCOMING EVENTS AND NEWLY-RELEASED PRIZES!

# FESTIVALS AND EVENTS

## ART IN PUBLIC PLACES

STARKVILLEARTS.NET

Art in Public Places is a year-round program where artists are given public exhibit space to sell their work in a variety of group and solo shows.

## BULLDOG BASH

MSUBULLDOGBASH.COM

Bulldog Bash takes place each fall on an away football game weekend in downtown Starkville. In addition to live musical concerts, the event features a major pep rally and an array of food vendors.

## CHARLES TEMPLETON RAGTIME JAZZ FESTIVAL

FESTIVAL.LIBRARY.MSSTATE.EDU

Charles Templeton Ragtime Jazz Festival is held during the spring semester and features a blend of major and mini concerts, seminars and tours of the Charles H. Templeton Sr. Music Museum at Mitchell Memorial Library.

## COTTON DISTRICT ARTS FESTIVAL AND TASTE OF STARKVILLE

STARKVILLEARTS.NET

Held each fall in the historic Cotton District in Starkville, the festival blends incredible art, music, and food into a showcase event. The festival is host to more than 125 artisans, as well as a Juried Art competition and show, Writer's Village, Taste of Starkville restaurant competition, Pet Parade, Student Art competition, and much more.

## INTERNATIONAL FIESTA

International Fiesta is sponsored each April by the Richard Holmes Cultural Diversity Center. Members of the campus and Starkville communities come together to celebrate and experience various world cultures, including representative food items and entertainment activities.

## KING COTTON CRAWFISH BOIL

STARKVILLE.ORG/VISIT/EVENTS/KING-COTTON-CRAWFISH-BOIL

Held at the Fire Station Park in downtown Starkville, bragging rights are on the line as local cooking teams show their best crawfish recipes along with add-ins and fixins.

## MAGNOLIA INDEPENDENT FILM FESTIVAL

MAGNOLIAFILMFEST.COM

Mississippi's oldest film festival, Magnolia Independent Film Festival is held in February and affords opportunities to view more than two dozen independent films.

## PUMPKINPALOOZA

STARKVILLE.ORG/VISIT/EVENTS/PUMPKINPALOOZA

Pumpkinpalooza is a fall semester family event held around Halloween in downtown Starkville that features a locally grown pumpkin patch, trick-or-treating with local merchants, live music and other fun events.





## OFF-CAMPUS STUDENT SERVICES

662.325.3611 | [OCSS.MSSTATE.EDU](http://OCSS.MSSTATE.EDU)  
YMCA BUILDING - GROUND FLOOR

Mississippi State University's Off-Campus Student Services (OCSS) exists to positively impact and benefit students, the university, and the surrounding area. OCSS provides centralized resources and support to cultivate independent life skills, develop strong civic leaders, and foster involvement in the university and the Starkville community.

We help students who are currently, or considering, living off campus and strive to provide students with the resources necessary to have a positive off-campus experience. OCSS is housed within the Dean of Students' Office, a part of the Division of Student Affairs.

## OUTDOOR RECREATION

### SAM D. HAMILTON NOXUBEE NATIONAL WILDLIFE REFUGE

[FWS.GOV/REFUGE/NOXUBEE](http://FWS.GOV/REFUGE/NOXUBEE)

Located 13 miles south of Starkville, the 48,000-acre Sam D. Hamilton Noxubee Wildlife Refuge is home to bald eagles, alligators, red-cockaded woodpeckers, bobcats, wild turkeys and other animals native to the region. In addition to hunters and fishers, regular visitors include birdwatchers, hikers and photographers. The Refuge, as it's known to most, also has several nature trails and observation decks.

### OTHER OUTDOOR RECREATIONAL OPPORTUNITIES

Also near Starkville are the John W. Starr Memorial Forest, an 8,200-acre natural woodlands park to the south; and the Tennessee-Tombigbee Waterway to the east that offers 1,000 miles of shoreline and 110,000 acres of land and water for fishing, boating, skiing, camping, hiking, and swimming.

Within the city limits, Starkville's Parks and Recreation Department maintains six public parks (**662.323.2294**, [starkvilleparks.com](http://starkvilleparks.com)). Starkville in Motion, a private organization, promotes bike trails, hiking trails, sidewalks, and more within the city.

Starkville, which bills itself as "Mississippi's College Town," offers a variety of entertainment opportunities that range from concerts to rodeos. To check the calendar of events, visit [members.starkville.org/events/calendar](http://members.starkville.org/events/calendar).



## ADDITIONAL ENTERTAINMENT OPTIONS INCLUDE:

**UEC Hollywood Premier Cinemas,**  
*10-screen movie theater*

662.320.9000 | [uecmovies.com](http://uecmovies.com)

**Skate Odyssey,**  
*roller skating rink*

662.323.8821 | [msskate.com](http://msskate.com)

**Southern Billiards,** 662.323.8821

**Mississippi Horse Park,  
Agricenter and Fairgrounds**

662.325.9350 | [mshorsepark.com](http://mshorsepark.com)

**Starkville Community Theatre**

662.323.6855 | [sct-online.org](http://sct-online.org)



## DISTINCTIVE DISTRICTS

### COTTON DISTRICT

Probably Starkville's most photographed area and a model for "New Urbanism" architecture, this area just off campus once included a collection of row houses and substandard residences associated with the neighborhood cotton mill. Today, it is filled with award-winning, brightly colored buildings evocative of Savannah, Charleston and New Orleans.

### DOWNTOWN STARKVILLE

662.323.3322 | [STARKVILLE.ORG](http://STARKVILLE.ORG)

The city's earliest identity as "Boardtown" disappeared with the massive sawmill and literal boardwalks, but Starkville has kept the flavor and character of its "boomtown" years around the turn of the 20th century. Well-preserved churches and the downtown 1925 Hotel Chester (on the National Register of Historic Places) add character and charm.

### NASH STREET HISTORIC DISTRICT

Mississippi State faculty and staff members built this neighborhood, Starkville's earliest subdivision, consisting of Tudor Revival, bungalow and craftsman styles dating from the early- and mid-20th century.

### GREENSBORO STREET HISTORIC DISTRICT

Cotton-hauling wagons that negotiated "Greensboro Road" on their way to the Tombigbee River were long gone by the time Starkville's prosperous merchants and professionals made Greensboro Street the address of choice for their Victorian, Tudor Revival, bungalow and craftsman homes from the 1860s through the 1930s.

### OVERSTREET HISTORIC DISTRICT

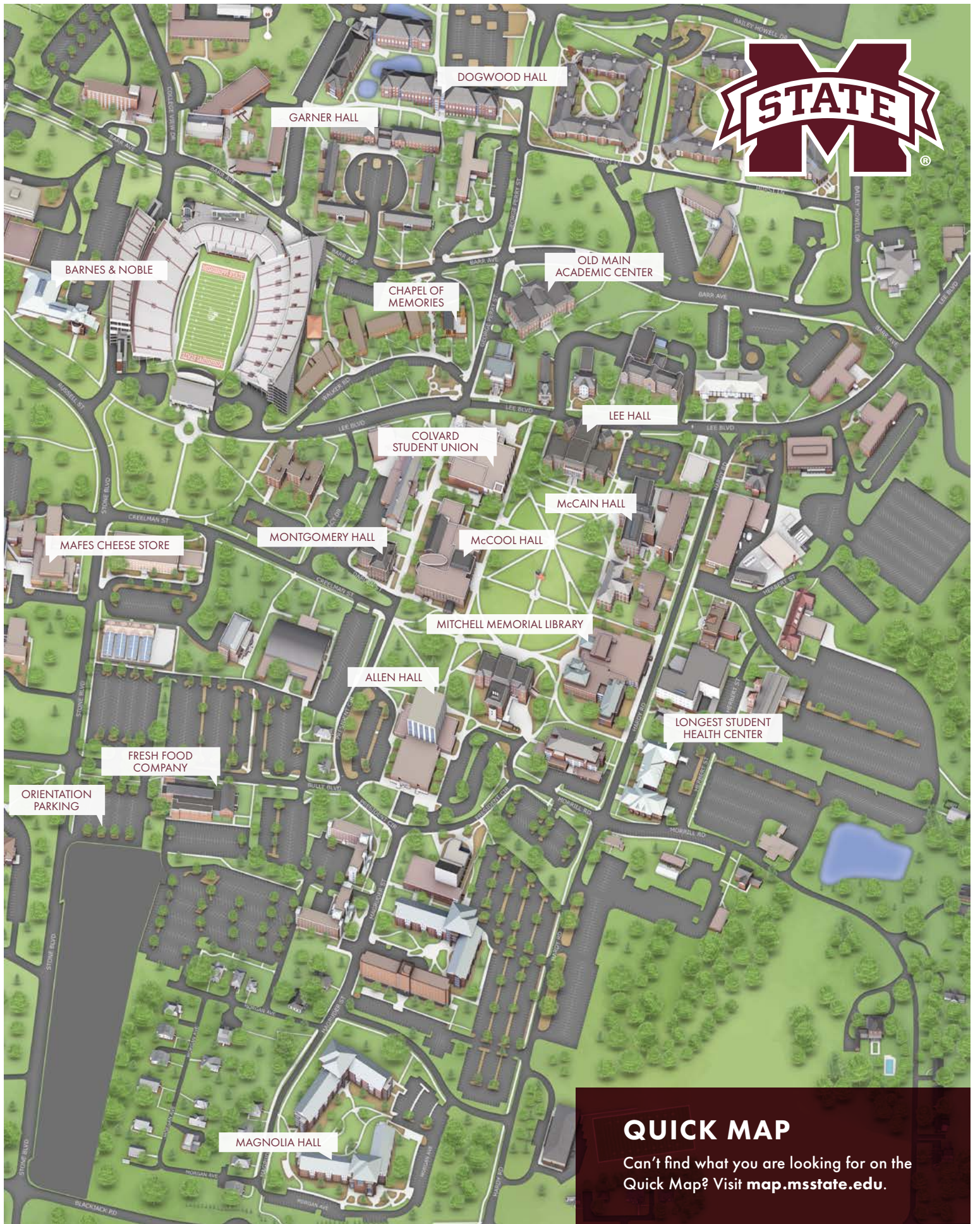
Houses built close to both downtown and Overstreet School (circa 1894) form Starkville's largest historic district. Overstreet homes range from ornate Queen Anne to mid-20th century craftsman and bungalow styles. The district is bordered by Washington Street to the west, Wood Street to the south, South Montgomery to the east and Hogan Street to the north.



# NOTES

*Mississippi State University is an equal opportunity institution. Discrimination in university employment, programs or activities based on race, color, ethnicity, sex, pregnancy, religion, national origin, disability, age, sexual orientation, gender identity, genetic information, status as a U.S. veteran, or any other status protected by applicable law is prohibited. Questions about equal opportunity programs or compliance should be directed to the Office of Civil Rights Compliance, 231 Famous Maroon Band Street, P.O. 6044, Mississippi State, MS 39762, (662) 325-5839.*





DOGWOOD HALL

GARNER HALL

BARNES & NOBLE

CHAPEL OF MEMORIES

OLD MAIN ACADEMIC CENTER

LEE HALL

COLVARD STUDENT UNION

McCAIN HALL

MAFES CHEESE STORE

MONTGOMERY HALL

McCOOL HALL

MITCHELL MEMORIAL LIBRARY

ALLEN HALL

LONGEST STUDENT HEALTH CENTER

FRESH FOOD COMPANY

ORIENTATION PARKING

MAGNOLIA HALL

## QUICK MAP

Can't find what you are looking for on the Quick Map? Visit [map.msstate.edu](http://map.msstate.edu).